

# ECOCARAT



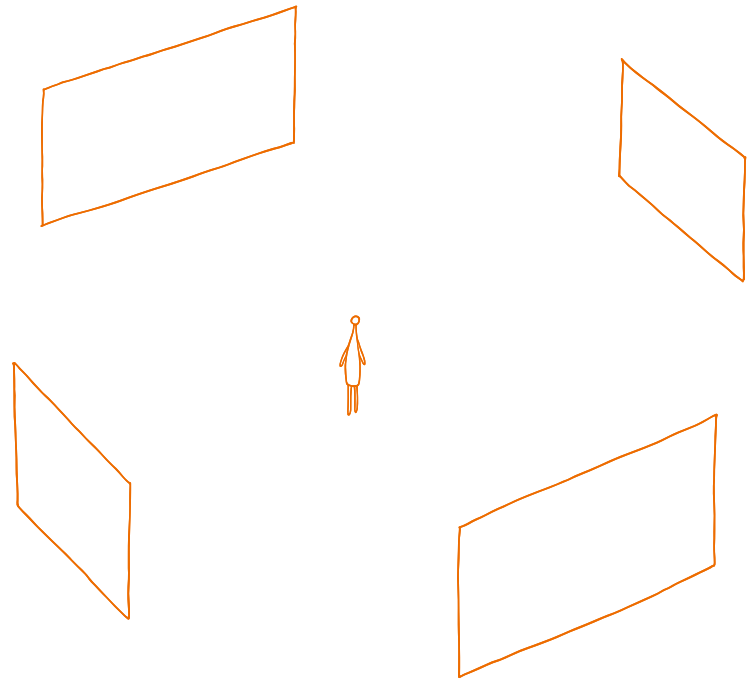
It is almost incredible, but  
90% of our homes is air!

# Contents

Introduction	Life, Air, and ECOCARAT	2
	Fulfillment of Four Promises	6
	We Deliver Excellence	14
ROOMS	Living with ECOCARAT	18
	Useful for Public Spaces as Well	54
ECOCARAT	List of products	66
	LUXURY MOSAIC / BROOKLYN BORDER / CRONICA	68
	GRANAS LINE / GRANAS VISTO / GRANAS RAXA	69
	GRANAS LUDRA / FANCY MOSAIC / LAYER MIX	70
	QUILT / LAND - EARTH FINISH - / LAND - STRIPPED STONE FINISH -	71
	PEARL MASK / PETRASQUARE / VELE	72
	CASSE / CUSCINO / FEMINA	73
	FINE BASE <NEW NATURAL> / FINE BASE <SIMPLE> / SPLINE	74
	SILKLINE / TAKEHIGO / NEW JURAKU	75
	ECOCARAT <sup>+</sup>	List of products
R SLIT / GRANAS VAGUE / GRANAS HART		80
SPRING AIR / CUSCINO / ROUGHSAWN		81
SHAILY / ROCK II / STONE II		82
FEMINA / TRAVERTINE / ARECHE		83
NUNOGARA / SPLINE / SILKLINE		84
TAKEHIGO		85
INFO.	Before using ECOCARAT / ECOCARAT PLUS	88
	Cautions when using ECOCARAT / ECOCARAT PLUS	89
	How to care for ECOCARAT / ECOCARAT PLUS	90

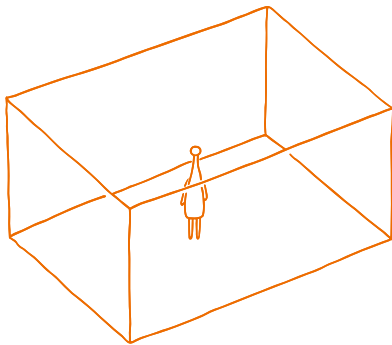


As fish can exist only in water,  
we cannot exist without air.

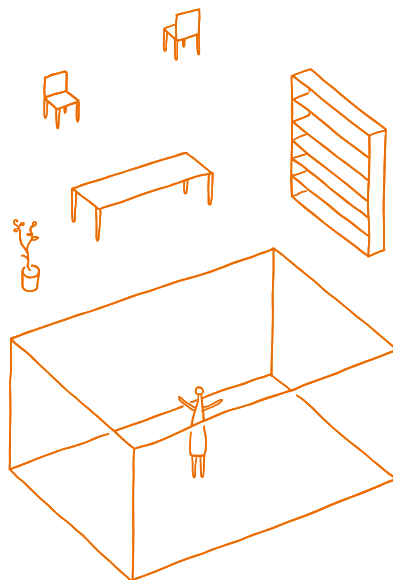


Separating air with walls  
changes a public place  
to a private space.

**Let us start living our lives  
by focusing our thoughts on air.**



A home is born when  
a “box of air” is created by putting together walls.  
It is a place that gives us peace of mind.



Put furniture and plants  
into the “box of air” to  
start living a life.

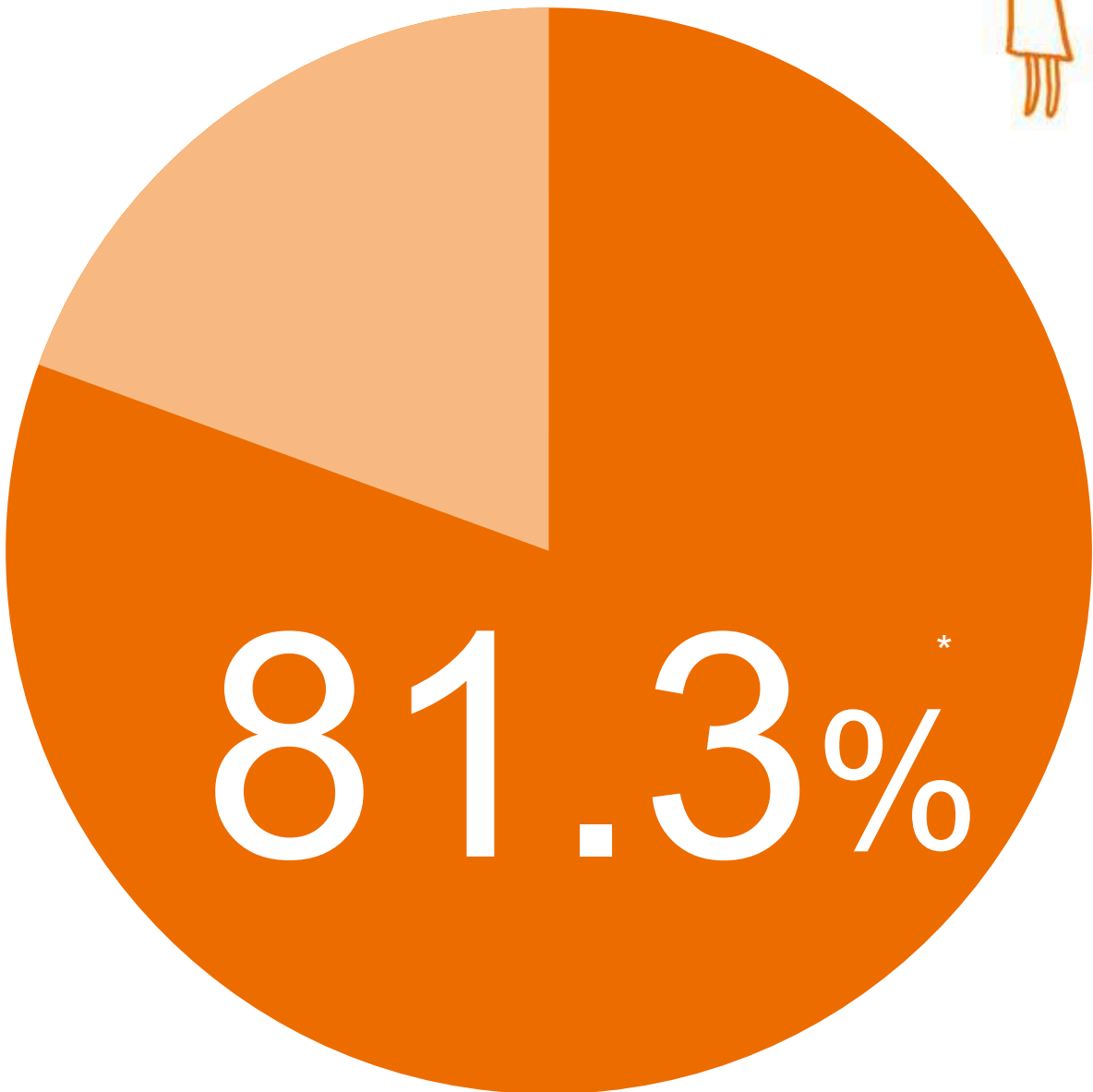
Clean and fresh air!

Walls that Create Happiness

# **ECOCARAT**

ECOCARAT is a wall material that offers wonderful air and living!

Spreading Around  
Wide Smiles!!



81.3%\*

## Satisfaction Percentage of ECOCARAT

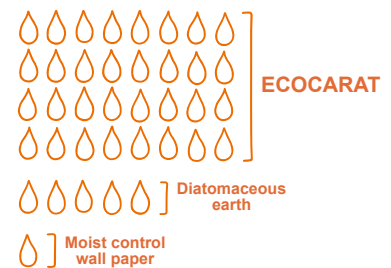
\* Survey conducted by LIXIL (using Macromill Monitor). A questionnaire survey was conducted for ECOCARAT users.  
Percentage of users who replied "Very satisfied" and "Quite satisfied" to the question "To what extent are you satisfied with ECOCARAT?"

**ECOCARAT continues to make everyone happy by fulfilling four promises.**

Promise 1

## Just the right amount of humidity

Absorbs excessive humidity that results in dampness.  
In dry weather, humidity is replenished from the reserve moisture.



Promise 2

## Refreshed smell

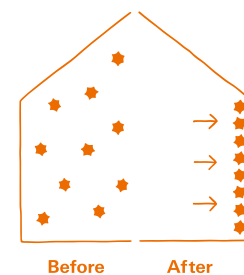
The smells of our daily lives that do not leave the house even after opening the windows are greatly deodorized.  
The components that cause household odors are absorbed, and the problem of bad odor is resolved.



Promise 3

## Reduces harmful substances

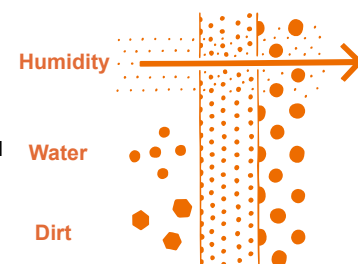
Harmful substances floating in the air that cannot be left untreated are either absorbed or lowered in concentration.  
The entire household is protected from health concerns that cannot be seen with eyes.



Promise 4

## Simple cleaning

While ECOCARAT absorbs humidity, bad odors, and harmful substances, it makes penetration of water and dirt difficult.  
It can be cleaned easily even when used in toilets and powder rooms where it tends to get stained.



\* This function is available only with ECOCARAT PLUS.

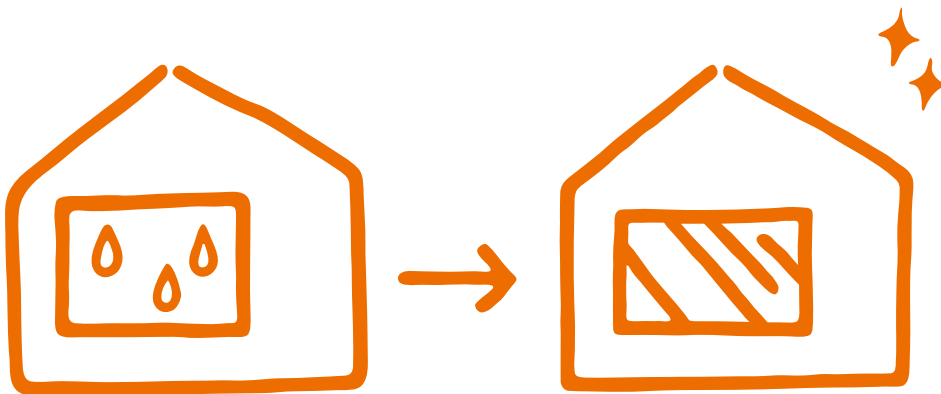
Promise 1

# Just the right amount of humidity

The humidity level in a room changes depending on the temperature and climate not only through the seasons but also during the course of a day.

ECO CARAT helps maintain a comfortable level of humidity throughout the year.

Bye bye dew condensation.

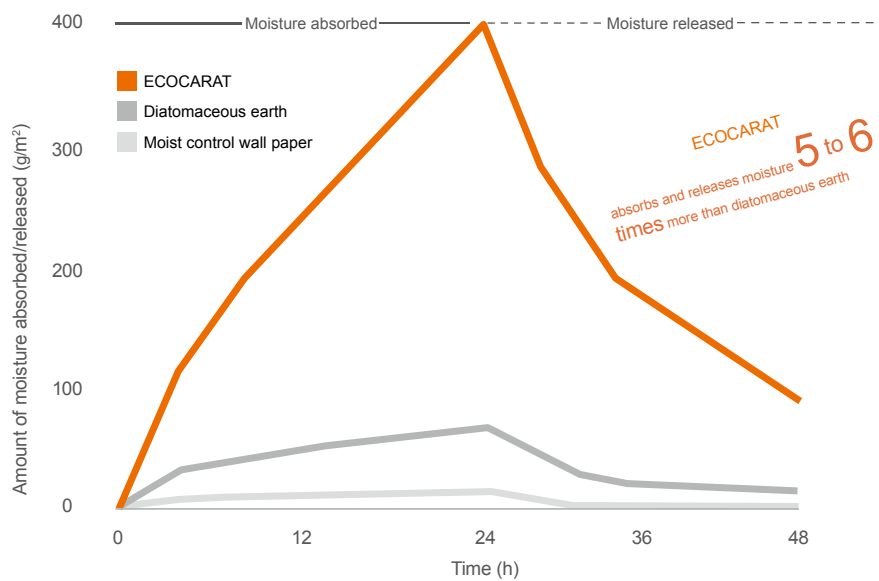


ECO CARAT can absorb excessive humidity.

It prevents dew condensation that tends to occur due to heating in winters, and absorbs the unpleasant humidity.

The dampness caused by drying clothes indoors can also be gotten rid of.

Comparison of moisture amount absorbed and released by different wall materials.



ECO CARAT  
absorbs and releases moisture  
5 to 6  
times more than diatomaceous earth

\* The result was based on LIXIL's test method (Amount of moisture absorbed/released at a relative humidity level of 50% -> 90% -> 50%), and might be affected by other building material, furniture, climate, and air circulation.



The mites seem to have migrated.

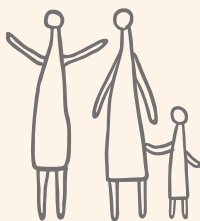
Maintains ideal humidity, thus inhibiting the spread of mold and mite.

An environment with 80% or more humidity level is extremely favorable for the multiplication of mold and mite.

Since ECOCARAT maintains the humidity level between 40% and 70%, it does not easily attract mold and mite, and also prevents throat dryness and skin peeling, thus supporting the creation of a comfortable indoor environment.

Moisture can also be absorbed from beds at risk of mold.

Voice of the customer

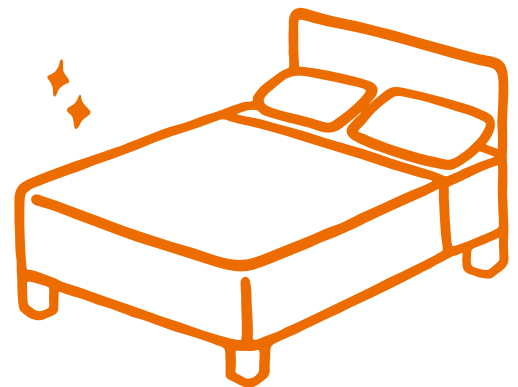


The walls and mattresses of a bedroom may suffer from mold during the time from the rainy season until summertime, when humidity rises sharply. By using ECOCARAT, the musty odor is removed, the dampness of the bed is taken care of, and we can sleep soundly.

In the household of Mr. S

Family members: Husband (41 years), Wife (42 years), Son (6 years)

\* Voice of the customer as acquired from the ECOCARAT monitor. The perception differs from person to person. Further, the effect of ECOCARAT may be different depending on conditions such as air circulation, way of living, climate, etc.



# Refreshed smell

It is said that a house emits an odor that is a collection of various smells of daily lives.

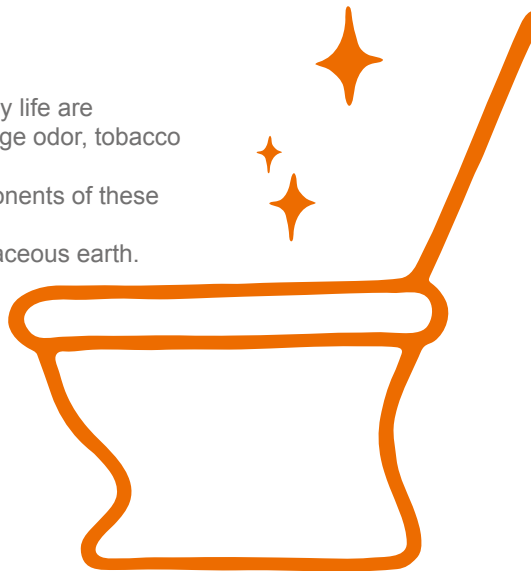
ECOCARAT absorbs the components that cause the various odors, and deodorizes or reduces these odors from their root.

Also used satisfactorily in toilets.

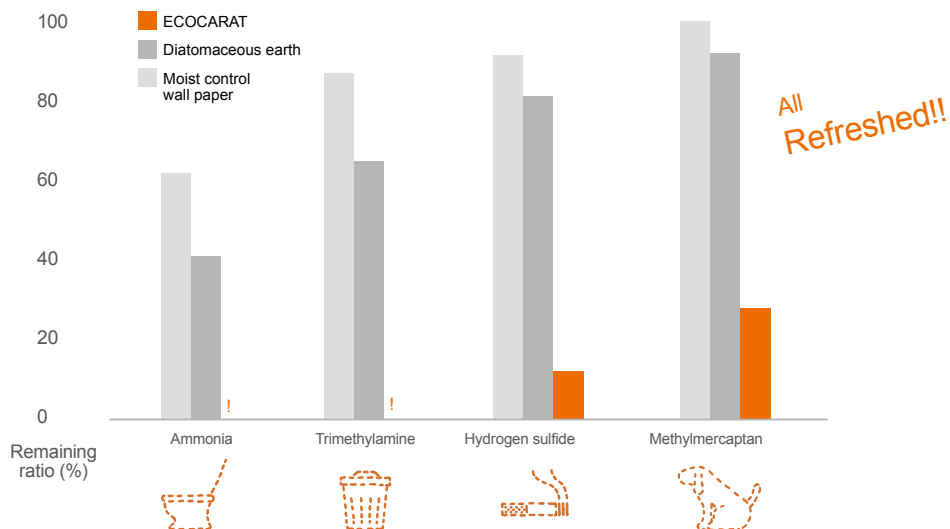
## Reducing toilet odor.

The four worst odors in everyday life are the toilet odor, household garbage odor, tobacco odor, and pet odor.

ECOCARAT absorbs the components of these odors and offers a stronger deodorizing power than diatomaceous earth.



Simply installing ECOCARAT can help you get rid of the four worst lingering odors.



! The remaining ratio of ammonia and trimethylamine when ECOCARAT is used is below the detectable level.

\* The result is based on the test conducted by LIXIL, and might be affected by the surrounding environment, such as the room usage conditions, climate, and air circulation.

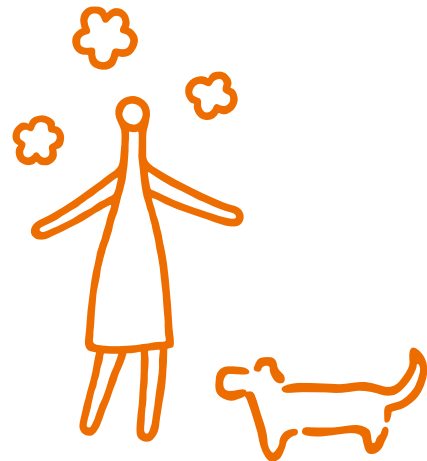
ECOCARAT assists with the removal of odors that cannot be eliminated by ventilation alone.

When you enjoy meat, fish, vegetables, and herbs, smell is an important spice for enhancing the flavor of food. Having said that, the smell that lingers on the next day is very unpleasant. ECOCARAT absorbs the smell of eatables too and offers you a refreshing morning.

The smell of dinner is largely reduced by morning.



You can even laugh when your dog piddles in the house.



Voice of the customer



There is a disturbing smell of dogs in houses where dogs live as family members. When ECOCARAT is used in such houses, the smell of pets is not very obvious and house members can relax in the living room having a clean atmosphere.

#### In the household of Mr. K

Family members: Husband (44 years), Wife (40 years), Daughter (14 years), Son (11 years)

\* Voice of the customer as acquired from the ECOCARAT monitor. The perception differs from person to person. Further, the effect of ECOCARAT may be different depending on conditions such as air circulation, way of living, climate, etc.

Promise 3

# Reduces harmful substances

Harmful substances floating in the air, or emitted from furniture and other building materials. ECOCARAT either absorbs or reduces the concentration of these substances thus creating a safe space for your family.

Because everyone hates a sick house.

Preventing kids from getting allergies.

Voice of the customer



Since the number of patients visiting a hospital due to allergies such as asthma and atopy condition is high, the characteristic of ECOCARAT that helps remove harmful substances (that could strongly irritate the mucous membrane or worsen the symptoms) brings a huge relief to patients.

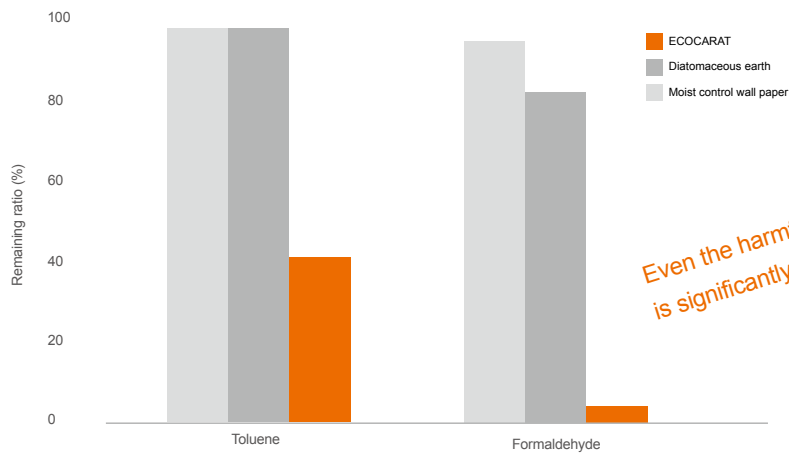
### In Clinic T

Staff members: Director, assistant director, and three nurses

\* Voice of the customer as acquired from the ECOCARAT monitor. The perception differs from person to person. Further, the effect of ECOCARAT may be different depending on conditions such as air circulation, way of living, climate, etc.



The two topmost harmful substances can also be absorbed by ECOCARAT.



Even the harmful formaldehyde is significantly reduced!

\* The result is based on the test conducted by LIXIL, and might be affected by other building material, furniture, climate, and air circulation.

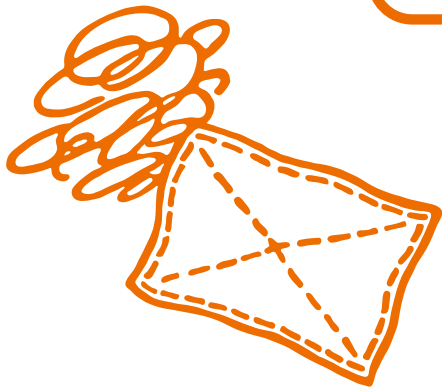
Promise 4

# Simple cleaning

The surface of ECOCARAT PLUS has a superfine structure. Water and dirt cannot penetrate easily, and even if dirt adheres to the surface, it can be cleaned easily.

\* This function is available only with ECOCARAT PLUS.

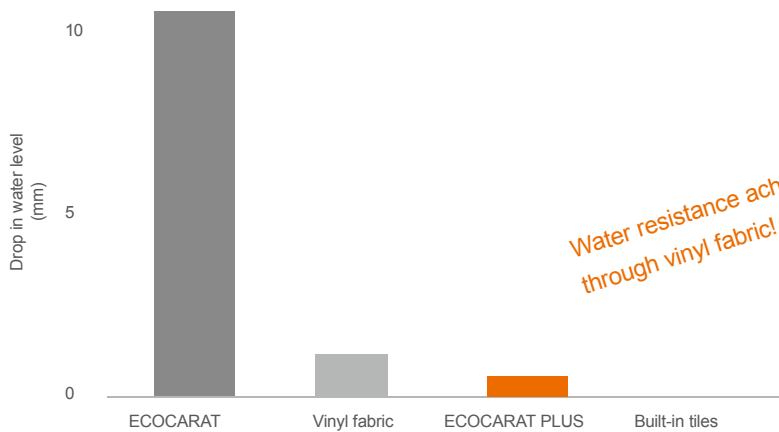
The daily cleaning task will be over before you know it.



ECOCARAT PLUS can be wiped with a damp cloth. It does a great job when used in toilets and powder rooms.

Although it has an excellent humidity control function, it does not absorb water easily, and therefore, it can be simply wiped with a damp cloth, which is difficult to perform in the case of humidity controlling materials.

Let's compare the amount of water that can be taken in...



\* A test tube having a diameter of 35 mm was placed on the surface of the test material, water was poured so that the height became 200 mm, and the decline in water level after one hour was measured. The result is based on the test conducted by LIXIL.

# We Deliver Excellence through ECOCARAT

The reason ECOCARAT has successfully kept its promises is because it is backed by a strong technology. Its recipe combines both traditional and contemporary elements. The spice is ECOCARAT's never-changing philosophy of "Eliminating the discomforts of living" since the time of its development. What we have been able to achieve is reliable ECOCARAT.

## The present “mud walls” that have inherited the Japanese wisdom.

The roots of ECOCARAT lie in the traditional method of construction of “mud walls” that have excellent compatibility with Japan’s climate.

Using the material of mud walls as a hint, and fusing it with the tile baking technology that LIXIL has cultivated through several years of research, ECOCARAT continues to evolve even today.

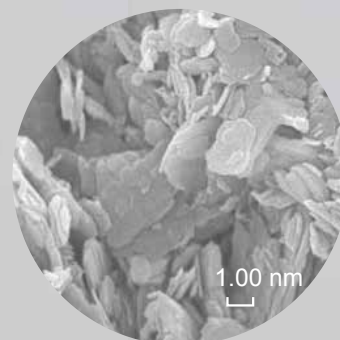
Moreover, since this material is active at zero energy, it is both eco-friendly and human-friendly.



## Recent technology using a size of 1/1,000,000th of a millimeter.

ECOCARAT has several holes for absorbing and releasing air. These holes are one nanometer (1/1,000,000th of a millimeter) in size, which is optimum for absorption of moisture and odors. This technology has been pursued in the field of absorption of substances that are not visible to the eye.

Due to the abundant number of holes, an excellent air cleansing performance is exhibited as compared to diatomaceous earth.



## “Awards and Certifications”

ECOCARAT has been registered and certified as a “Humidity Control Building Material” and “Formaldehyde Reducing Building Material”. Its excellent performance has been recognized by public institutions.

It has also received the “Good Design Long Life Design Award” that is presented to tools and equipment that continue to be loved and supported by a lot of people.



調湿建材  
—出 日本建材・住宅設備業協会

“Humidity Control Building Material”  
Registered by the Japan Construction Material and Housing Equipment Industries Federation.



認定番号	BCJ-AIBT-B
認定基準名・番号	室内空気中の揮発性有機化合物汚染低減建材認定基準 BCJ-CS-G-2012
認定有効期限	2017年7月17日

“Formaldehyde Reducing Building Material”  
Certified by the Building Center of Japan.



“Good Design Award”  
Evaluated by the Japan Institute of Design Promotion.



# ROOMS



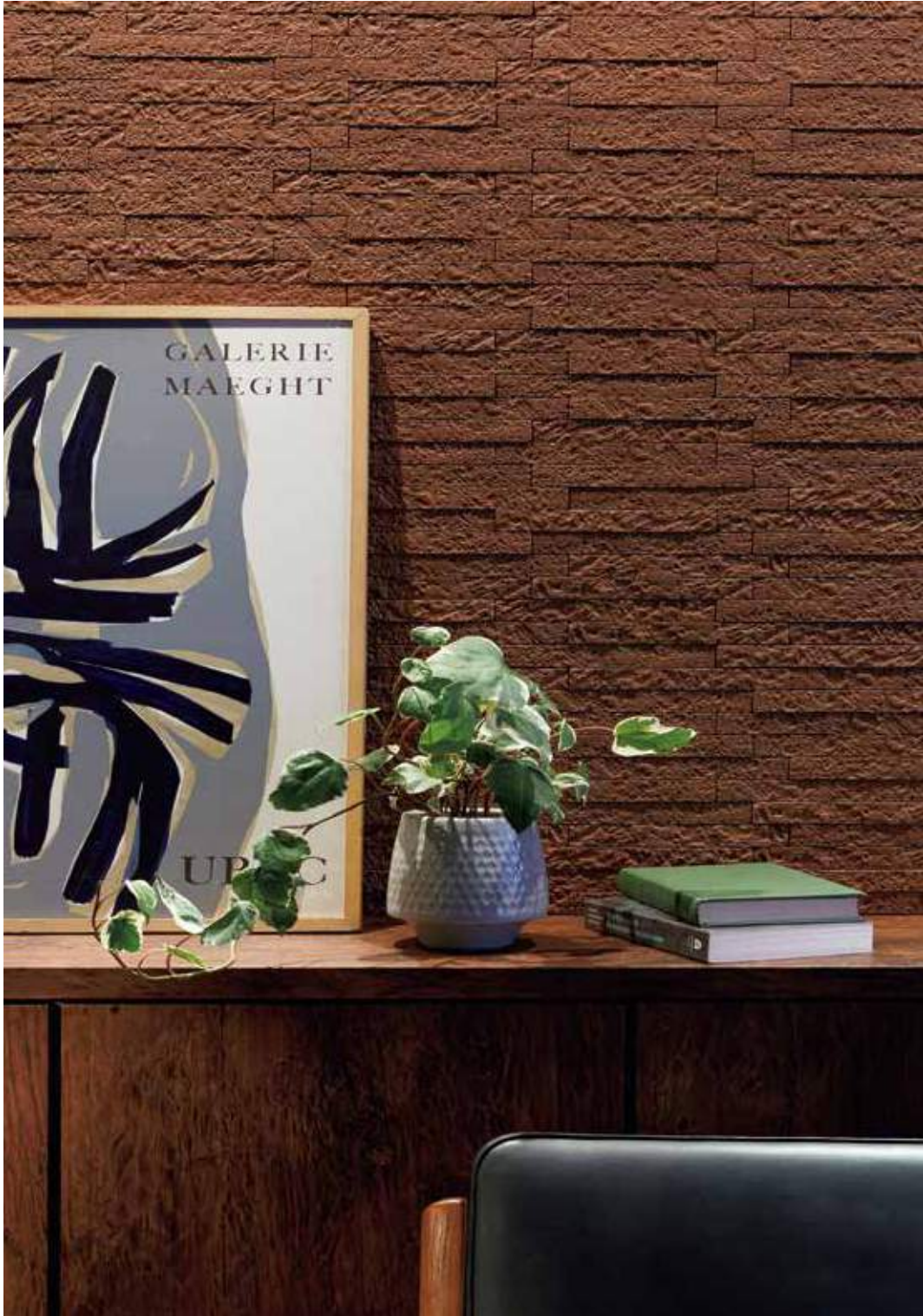
# LIVING ROOM

An open space and comfortable and clean air create a cozy living room where everybody gather spontaneously.



ECOCARAT <BROOKLYN BORDER> P68 ECO-2520NET/BRN4





Both left and right: ECOCARAT <BROOKLYN BORDER> P68 ECO-2520NET/BRN4

You can invite persons close to you  
or spend some quality time alone.  
A relaxing atmosphere for adults is created  
from a mature space.



Left: ECOCARAT <LUXURY MOSAIC> P68 ECO-25NET/LUX2  
Right: ECOCARAT <LUXURY MOSAIC> P68 ECO-25NET/LUX3





ECOCARAT <FEMINA> P73 ECO-303/FMN5

Enjoy a casual conversation  
over a cup of good coffee.  
This is how close you  
were to happiness.





Left: ECOCARAT <FANCY MOSAIC> P70 ECO-275NET/FAM3 / Right: ECOCARAT <CRONICA> P68 ECO-151/CRC1





Left: ECOCARAT <GRANAS LINE> P69 ECO-2515NET/GLN1NN / Top right: ECOCARAT <GRANAS LUDRA> P70 ECO-2515NET/LDR2NN  
Middle right: ECOCARAT <PEARL MASK> P72 ECO-60NET/PMK1NN / Bottom right: ECOCARAT <LAND -EARTH FINISH- > P71 ECO-275NET/PLD2NN







Right: ECOCARAT <GRANAS RUDRA> P70 ECO-2515NET/LDR1NN

Top left: ECOCARAT <GRANAS VISTO> P69 ECO-R/VIT1NN

Bottom left: ECOCARAT <BROOKLYN BORDER> P68 ECO-2520NET/BRN2

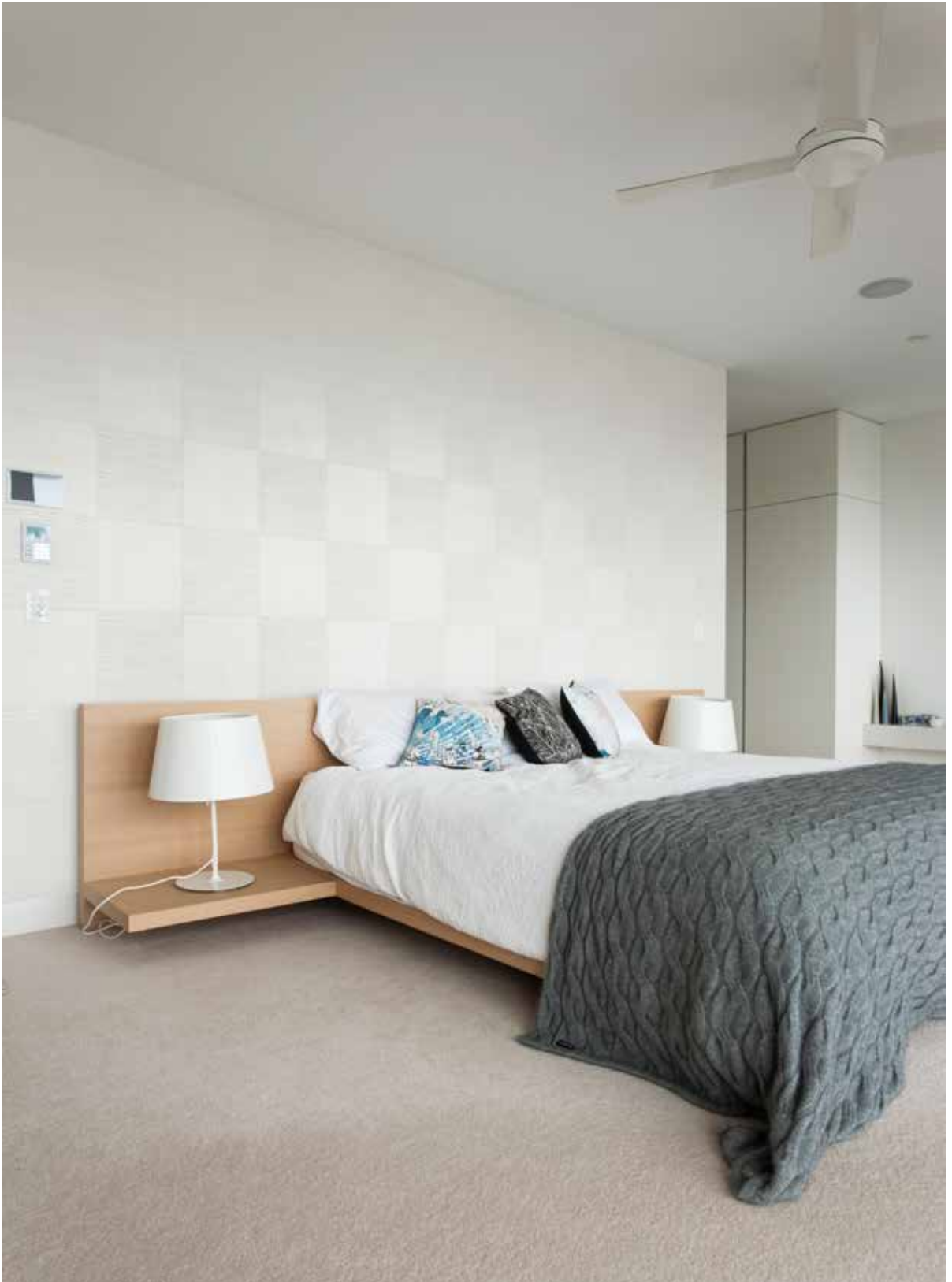
# BED ROOM

Surprisingly, the bedroom is the place where humidity may be confined. Since it is the place where we spend almost one third of our day, or life, we want it to have high-quality air.





ECOCARAT <CRONICA> P68 ECO-151/CRC1



Left: ECOCARAT <TAKEHIGO> P75 ECO-303/TK1NN

Bottom right: ECOCARAT <VELE> P72 ECO-30NET/WE1NN





Left: ECOCARAT <QUILT> P71 ECO-60NET/QLT2 / Right: ECOCARAT <GRANAS RAXA> P69 ECO-315/RAX3NN, ECO-315/RAX3ANN, ECO-3151/RAX3ANN (R)

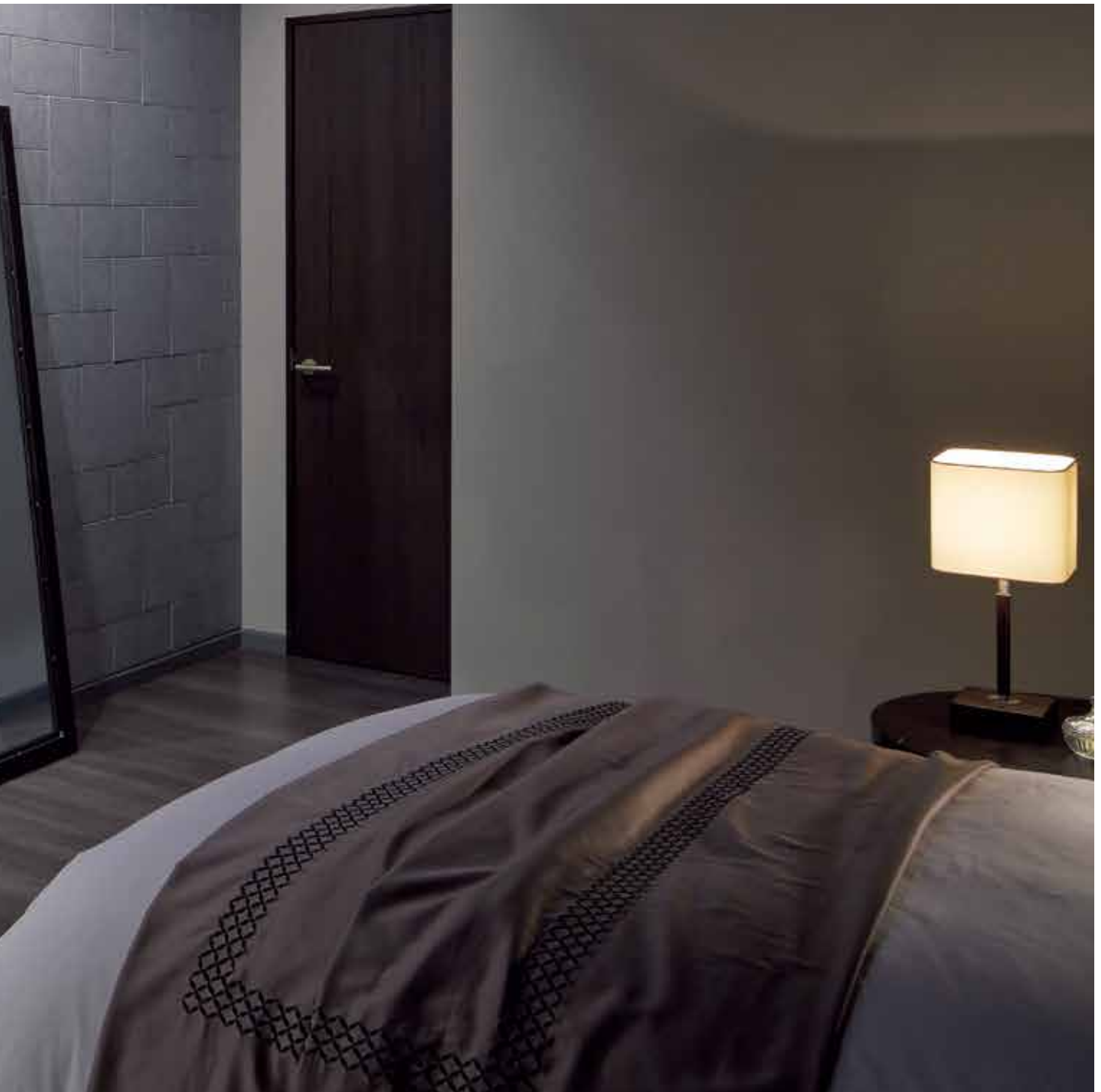


If you wake up fresh in the morning,  
you feel good throughout the day.  
This can happen through a good night's sleep  
in a place that relaxes both the mind and body.





ECOCARAT <LAYER MIX> P70 ECO-SET/LAY3

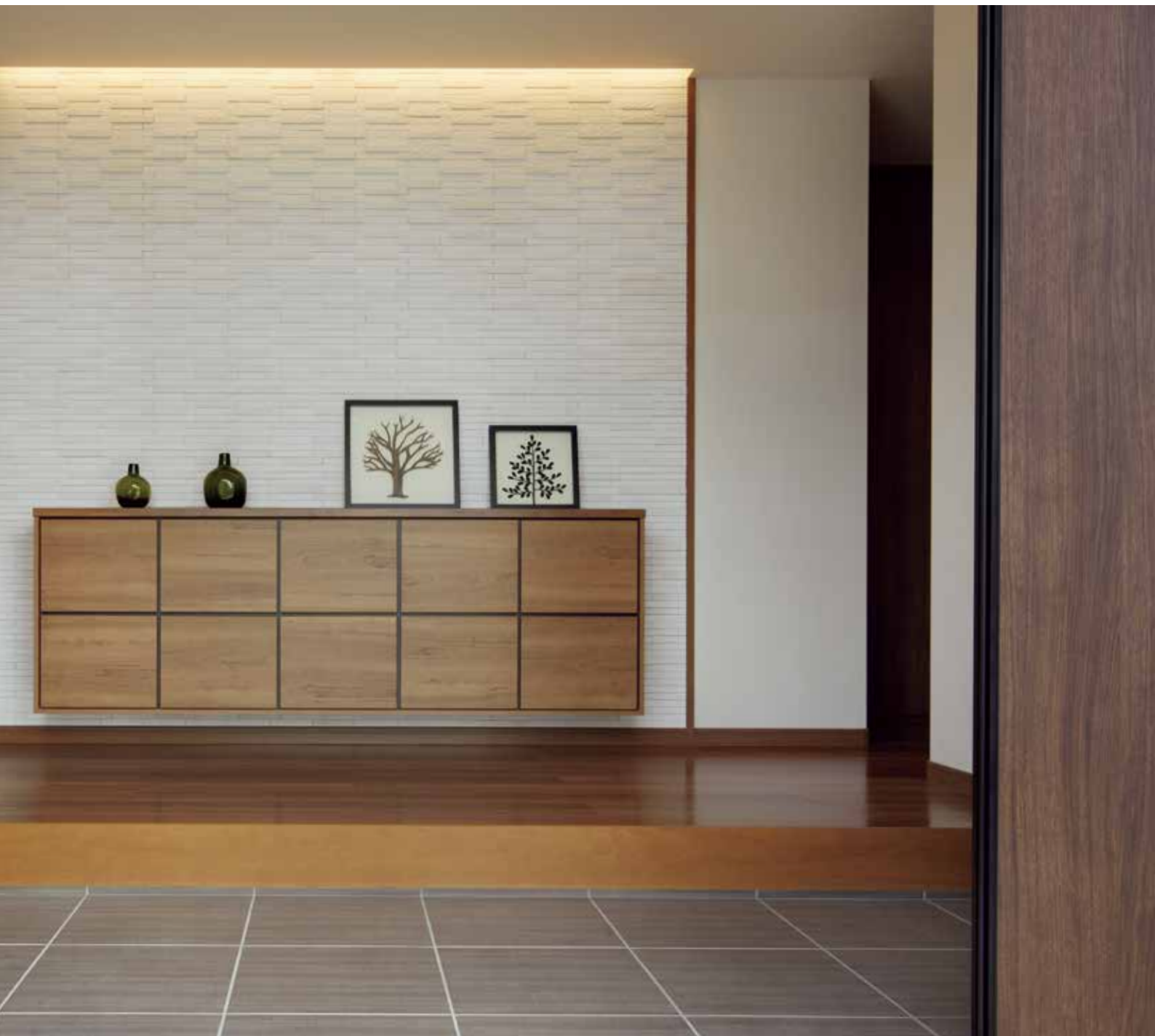


# ENTRANCE

The entrance creates the first impression of a house.

Getting rid of unpleasant odors and humidity enables you to invite your family and friends over with peace of mind.





Left: ECOCARAT <FINE BASE> P74 ECO-303/NN0NN  
ECOCARAT <GRANAS RUDRA> P70 ECO-2515NET/LDR4NN  
Right: ECOCARAT <GRANAS RUDRA> P70 ECO-2515NET/LDR4NN



You can take a pleasant breath of fresh air when leaving your house and also when you get back. This sophisticated way of switching oneself ON and OFF for the day helps one get back into the daily swing of things.

Top left: ECOCARAT <PETRASQUARE> P72 ECO-60NET/PTS1NN  
Bottom: ECOCARAT <GRANAS RUDRA> P70 ECO-2515NET/LDR5NN







# JAPANESE ROOM

A Japanese-styled room may be more relaxing than any other places across the house. Cleansed air and a dignified appearance play a role in adding more elegance to the room.

Left: ECOCARAT <NEW JURAKU> P75 ECO-303/NJ1NN

# KIDS ROOM

Children learn many things in their own rooms that help them grow fast and healthily. Healthy air is a big relief, making it easy to watch over them.



Left: ECOCARAT <CUSCINO> P73 ECO-151/CSN5NN

Top right: ECOCARAT <CUSCINO> P73 ECO-151/CSN1NN - CSN4NN





Left: ECOCARAT PLUS <SILKLINE> P84 ECP-303/SLA2N / Right: ECOCARAT PLUS <SHAILY> P82 ECP-30NET/SHY3



# LAVATORY

The lavatory is the place where the day begins.  
Diligent cleaning of the lavatory is indispensable  
to ensure a pleasant day.  
Therefore, a lavatory that does not tend to get dirty  
makes everyone happy.



# TOILET

How one spends time in the toilet may vary from person to person, but the requirement of a good toilet surely remains the same everywhere. While a clean toilet is the number one priority, “Bad odor must not linger and it must be easy to clean.”





Top left: ECOCARAT PLUS <NUNOGARA> P84 ECP-303/NU4N / Bottom left: ECOCARAT <FANCY MOSAIC> P70 ECO-275NET/FAM1  
Right: ECOCARAT PLUS <SPLINE> P84 ECP-303/SPN1N, SPN3N



Left: ECOCARAT PLUS <GRANAS HART> P80 ECP-250/HRT1  
Center: ECOCARAT PLUS <ROUGHSAWN> P81 ECP-275NET/RGS1  
Right: ECOCARAT PLUS <GRANAS HART> P80 ECP-250/HRT2





## PUBLIC SPACE

# Reception

Suitable for the reception area of an office building, and offers a comfortable and hospitable feel. Also simply exhibits an element of elegance.

The reception area in an office building represents the entire company.

Light from outside accentuates the slit-like reliefs in ECOCARAT PLUS, and creates a refreshing and premium space.

The excellent design and comfortable air offer a sense of hospitality to visitors.

ECOCARAT PLUS <R SLIT> P80 ECP-630/RST1

PUBLIC SPACE

# Dining Hall



Can be used in the dining hall of educational facilities.

A bright and clean atmosphere creates a fun space for lively conversations.

It is important to create a comfortable environment in the dining hall of educational institutions that is used almost everyday. The light and warm color tones of ECOCARAT PLUS provide a feeling of warmth, and are most suitable for creating relaxed and comfortable spaces where lively conversations can take place. The unpleasant smell of others' food that may be felt at times is also reduced.

ECOCARAT PLUS <SPRING AIR> P81 ECP-630/AIR3



PUBLIC SPACE

# Front Counter

This is a non-ordinary space different from the usual.

A charming front desk of a hotel offers a charming travel experience.

This is the hotel life that gives a feel of the extraordinary, slightly different from the usual life. We recommend ECOCARAT PLUS for use in the front area of a hotel that creates the very first impression since the three-dimensional appearance of the reliefs leaves a memorable impact when combined with lighting.

Even when you get drenched in rain during travel, the function of ECOCARAT PLUS to help reduce dampness, and a luxurious impression will make you cheerful.

ECOCARAT PLUS <GRANAS VAGUE> P80 ECP-315/VAG1





A comfortable lounge area  
suitable for business.  
Clean air creates a welcoming space.

The lounge area of an office is the place  
where important visitors are first taken to.  
Clean air further adds to the attractiveness  
of chic and calm interiors for the business.

ECO CARAT PLUS <STONE II> P82 ECP-SETA/STN3

PUBLIC SPACE

# Lobby

## PUBLIC SPACE

# Kindergarten

As compared to adults, children are more easily affected by the surrounding air. Therefore, a kindergarten must always be “pretty and clean”.

It is said that due to their small bodies, children are easily affected by the surrounding air. ECOCARAT absorbs or reduces harmful substances such as formaldehyde, which is the major cause of the sick-house syndrome.

It creates a safe and secure space for children.

When you choose ECOCARAT having puffed-up reliefs, a gentle atmosphere is created that will make all children fall in love with its “adorable charm”!

ECOCARAT PLUS <CUSCINO> P81 ECP-151/CSN1N to CSN4N





## PUBLIC SPACE

# Restaurant

A delicious smell must stay pleasant.

ECOCARAT creates a restaurant environment that enhances the quality of food.

A restaurant is a place where several odors may unexpectedly blend with each other.

Even special smells cannot be fully enjoyed if they mix with the smell of food and flavors from the nearby tables.

When ECOCARAT is used, the surrounding smell is reduced, and the high-quality color scheme matched with the space creates a space that enhances the pleasure of having a meal.

ECOCARAT PLUS <FEMINA> P83 ECP-303/FMN3N

PUBLIC SPACE

# Cafe



Enjoy a peaceful moment  
in a comfortable, tranquil,  
and soothing cafe space.

You may drink coffee, read a book, or have a chat with  
people who you get along with so well.  
A cafe must offer a space where some fun time can  
be spent.

ECOCARAT that provide the image of brick walls  
create a peaceful and natural space.

ECOCARAT PLUS <GRANAS HART> P80 ECP-250/HRT1



## PUBLIC SPACE

# Nursing home

Since a nursing home can also be called as one's home, it must not lack in pleasant and healthy air.

In nursing homes, bad odor is an important issue concerning one's dignity.

Particularly, clean and comfortable air

must be ensured in the room where most part of the day is spent.

Since ECOCARAT PLUS reduces the odor

caused by nursing care, not only those who live in nursing homes,

but visitors too can spend some quality time.

ECOCARAT PLUS <ROCK II> P82 ECP-SET2/RCK3



PUBLIC SPACE

# Lavatory

Public Toilet





Odors and humidity are effectively absorbed.  
ECOCARAT supports the creation of  
a clean environment in the facility.



A public toilet is visited by several persons daily.  
Although it is not a striking element of a facility,  
it unexpectedly leaves an impression on people.  
The easy-to-maintain ECOCARAT PLUS  
controls odors and humidity,  
and offers high-quality air and comfortable interiors.

Top left: ECOCARAT PLUS <R SLIT> P80 ECP-630/RST2

Bottom left: ECOCARAT PLUS <ARECHE> P83 ECP-303/ARE1N

Top right: ECOCARAT PLUS <TRAVERTINE> P83 ECP-345/TRV2

Bottom right: ECOCARAT PLUS <GRANAS VAGUE> P80 ECP-315/VAG1



The design and size can be freely  
coordinated from an abundant variety of choices.  
You will surely be able to create the space of your dreams.

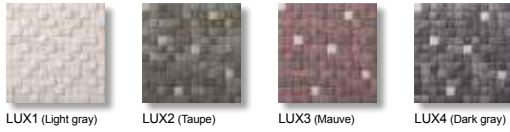
**ECO CARAT**

# List of products

## G Series

### LUXURY MOSAIC ECO-25NET

→P68



LUX1 (Light gray) LUX2 (Taupe) LUX3 (Mauve) LUX4 (Dark gray)

### BROOKLYN BORDER ECO-2520NET

→P68



BRN1 (White) BRN2 (Gray) BRN3 (Beige) BRN4 (Brown)

### CRONICA ECO-151

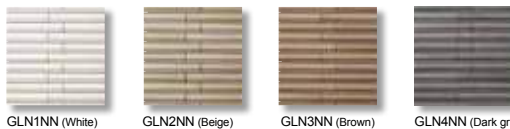
→P68



CRC1 (White) CRC2 (Beige) CRC3 (Brown)

### GRANAS LINE ECO-2515NET

→P69



GLN1NN (White) GLN2NN (Beige) GLN3NN (Brown) GLN4NN (Dark gray)

### GRANAS VISTO ECO-R

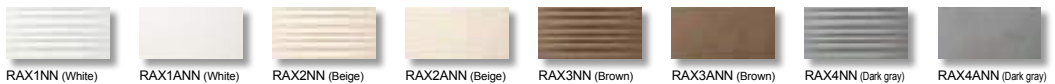
→P69



VIT1NN (White) VIT2NN (Beige) VIT3NN (Brown)

### GRANAS RAXA ECO-315

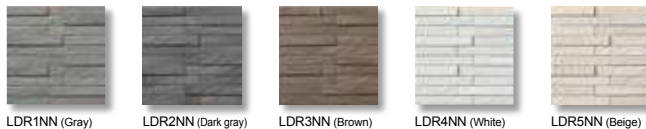
→P69



RAX1NN (White) RAX1ANN (White) RAX2NN (Beige) RAX2ANN (Beige) RAX3NN (Brown) RAX3ANN (Brown) RAX4NN (Dark gray) RAX4ANN (Dark gray)

### GRANAS LUDRA ECO-2515NET

→P70



LDR1NN (Gray) LDR2NN (Dark gray) LDR3NN (Brown) LDR4NN (White) LDR5NN (Beige)

## S Series

### FANCY MOSAIC ECO-275NET

→P70



FAM1 (Light gray) FAM2 (Sky blue) FAM3 (Flamingo pink) FAM4 (Gray beige) FAM5 (Old rose)

### LAYER MIX ECO-SET

→P70



LAY1 (White) LAY2 (Light gray) LAY3 (Gray)

### QUILT ECO-60NET

→P71



QLT1 (White) QLT2 (Gray beige)

### LAND - EARTH FINISH - ECO-275NET

→P71



PLD1NN (Ivory) PLD2NN (Beige)

### LAND - STRIPPED STONE FINISH - ECO-275NET

→P71



RO1NN (Ivory) RO2NN (Beige)

### PEARL MASK

ECO-60NET

→P72



PMK1NN (Pearl cream) PMK2NN (Pearl beige)

### PETRASQUARE

ECO-60NET

→P72



PTS1NN (Light gray) PTS2NN (Light beige)

### VELE

ECO-30NET

→P72



WE1NN (White) WE2NN (Ivory) WE3NN (Beige) WE4NN (Gray)

### CASSE

ECO-30NET

→P73



M1NN (Ivory beige) M2NN (Beige) M3NN (Light green) M4NN (Cotto beige)

### CUSCINO

ECO-151

→P73



CSN1NN (White) CSN2NN (Beige) CSN3NN (Gray) CSN4NN (Coral red) CSN5NN (Blue green)

F Series

### FEMINA

ECO-303

→P73



FMN1 (White) FMN2 (Lavender) FMN3 (Grayish blue) FMN4 (Rose) FMN5 (Mauve) FMN6 (Grayish brown)

### FINE BASE

<NEW NATURAL>

ECO-303

→P74



NN0NN (White) NN1NN (Off-white) NN2NN (Beige) NN11 (Light brown) NN12 (Gray)

### FINE BASE

<SIMPLE>

ECO-303

→P74



F1WNN (Flat) R1NN (Rib)

### SPLINE

ECO-303

→P74



SPN1NN (White) SPN2NN (Beige) SPN3NN (Light rose) SPN4NN (Light green)

### SILKLINE

ECO-303

→P75

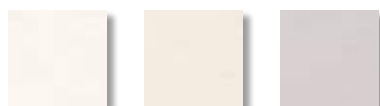


SLA1NN (White) SLA2NN (Beige) SLA3NN (Gray)

### TAKEHIGO

ECO-303

→P75

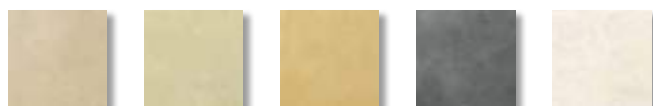


TK1NN (White) TK2NN (Light beige) TK3NN (Gray)

### NEW JURAKU

ECO-303

→P75



NJ1NN (Sand beige) NJ3NN (Olive gray) NJ6NN (Golden brown) NJ8NN (Charcoal brown) NJ9NN (Snow white)

Please confirm the detailed specification of each product on each product page.  
For the common precautions to be taken for each series, refer to "Before using ECOCARAT / ECOCARAT PLUS" (P88).

## LUXURY MOSAIC Expressive mosaic inlaid with accent colors produces a luxurious space.



ECO-25NET/LUX1  
(Light gray) (VIT1)\*



ECO-25NET/LUX2  
(Taupe) (LUX2)\*



ECO-25NET/LUX3  
(Mauve) (LUX3)\*



ECO-25NET/LUX4  
(Dark gray) (HRT2)\*

Shape	Model number	Size	Thickness (mm)
25 x 25 mm net mounted	ECO-25NET/LUX1 - LUX4	303 x 303	6.0•8.5
90°corner net mounted	ECO-25N/90-14/LUX1 - LUX4	(25.25 + 25.25)•(27.75 + 27.75) x 303	6.0•8.5
25 x 25 mm (for corners) net mounted	ECO-25N1/LUX1 - LUX4	25.25 x 303	6.0

• Wide variety of colors to express a natural taste. • As the side edges are not decorated, the color will be different from the color of the surface. Check the actual product or sample to confirm the color. • Multiple relief tiles are mixed in this product. • LUX2, LUX3, and LUX4 sheets have a designated orientation. The standard installation is for the brightly-colored piece to be on the top left of the sheet. • While the relief pattern is designed to have random direction, there are cases where the relief pattern may have same direction. • Has color variations by material, decoration, firing doneness and mixing for design purpose.

## BROOKLYN BORDER A design that looks as if the earth has been tamped by hand is recommended for natural and simple spaces.



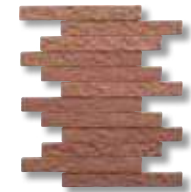
ECO-2520NET/BRN1  
(White) (VIT1)\*



ECO-2520NET/BRN2  
(Gray) (BRN2)\*



ECO-2520NET/BRN3  
(Beige) (BRN3)\*



ECO-2520NET/BRN4  
(Brown) (BRN4)\*

Shape	Model number	Nominal size	Thickness (mm)
25 x 202 mm net mounted	ECO-2520NET/BRN1 - BRN4	303 x 202	7.5•9.5
90°corner net mounted	ECO-2520N/90-14/BRN1 - BRN4	(38 + 105) x 303	7.5•9.5
25 x 101 mm short edge glazed net mounted	ECO-2510N1/BRN1 - BRN4	101.5 x 303	7.5

• Wide variety of colors to express a natural taste. • Because the specification of this product requires keeping approximately 1.0 mm space for vertical and horizontal joint width, the backing net and lines of adhesive may become visible. • As the side edges are not decorated, the color will be different from the color of the surface. Check the actual product or sample to confirm the color. • Multiple relief tiles are mixed in this product. • Has color variations by material, decoration, firing doneness and mixing for design purpose.

## CRONICA Features a serene color variation that appears to have weathered over time.



ECO-151/CRC1  
(White) (VIT1)\*



ECO-151/CRC2  
(Beige) (H4)\*



ECO-151/CRC3  
(Brown) (CRC3)\*

Shape	Model number	Nominal size	Thickness (mm)
151 x 151 mm	ECO-151/CRC1 - CRC3	151.5 x 151.5	6.5•8.5
Outer corner set	ECO-1575SETA/CRC1 - CRC3	151.5 x 151.5, 151.5 x 75.75	6.5
One edge touched-up set	ECO-1575SETB/CRC1 - CRC3	151.5 x 151.5, 151.5 x 75.75	6.5

• Exclusive brick joint tiles. When tiles are laid in the straight-joint pattern, a large gap appears at the intersecting points of joints. • A pattern design is provided here and there to give the feel of natural earth. Particularly, the color code CRC1 has a design in which brown color is superimposed on the raised parts of a white-colored base layer. • Wide variety of colors to express a natural taste. • The specification of this product requires keeping approximately 1.0 mm space for the joint width, but the outer circumference may become rounded and joints may open up by a few millimeters, making lines of adhesive visible at some parts. • As the side edges are not decorated, the color will be different from the color of the surface. Check the actual product or sample to confirm the color. • Multiple relief tiles are mixed in this product. • A touch up finish is applied to the edge surface of outer corner set and one edge touched-up set. • Has color variations by material, decoration, firing doneness and mixing for design purpose.

## GRANAS LINE

Features horizontally striped reliefs. Shades are emphasized by light, and a luxurious space is produced.



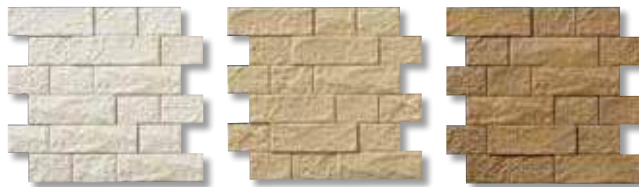
ECO-2515NET/GLN1NN (White) (SP1)\*    ECO-2515NET/GLN2NN (Beige) (GLN2)\*    ECO-2515NET/GLN3NN (Brown) (GLN3)\*    ECO-2515NET/GLN4NN (Dark gray) (LDR2)\*

Shape	Model number	Nominal size	Thickness (mm)
25 x 151 mm net mounted	ECO-2515NET/GLN1NN - GLN4NN	303 x 303	8.5
90° corner net mounted	ECO-2515N/90-14/GLN1NN - GLN4NN	(36.9 + 74.75) x 303	8.5
25 x 151 mm short edge glazed net mounted	ECO-2515N1/GLN1NN - GLN4NN	189.35 x 303	8.5

• Wide variety of colors to express a natural taste. • Because the specification of this product requires keeping approximately 1.0 mm space for vertical and horizontal joint width, the backing net and lines of adhesive may become visible. • As the side edges are not decorated, the color will be different from the color of the surface. Check the actual product or sample to confirm the color. • Has color variations by material, decoration, firing doneness and mixing for design purpose.

## GRANAS VISTO

Walls having a soft finish produce a natural space with a sense of luxury.



ECO-R/VIT1NN (White) (VIT1)\*    ECO-R/VIT2NN (Beige) (VIT2)\*    ECO-R/VIT3NN (Brown) (VIT3)\*

Shape	Model number	Nominal size	Thickness (mm)
Different shape border net mounted	ECO-R/VIT1NN - VIT3NN	303 x 303	7.0 - 9.0
90° corner net mounted	ECO-C/90-14/VIT1NN - VIT3NN	(39.35 + 77.25) x 303	7.0 - 9.0
Different shape border short edge glazed net mounted	ECO-C/VIT1NN - VIT3NN	75.75 x 303	7.0

• A pattern design is provided here and there to give the feel of natural stone. Particularly, the color code VIT1NN has a design in which brown color is superimposed on the raised parts of a white-colored base layer. • Because the specification of this product requires keeping approximately 1.0 mm space for vertical and horizontal joint width, the backing net and lines of adhesive may become visible. • As the side edges are not decorated, the color will be different from the color of the surface. Check the actual product or sample to confirm the color. • Multiple relief tiles are mixed in this product. • Has color variations by material, decoration, firing doneness and mixing for design purpose.

## GRANAS RAXA

Features supple reliefs that look as if a cloth has been spread out. A space can be given a luxurious look when combined with lighting.



ECO-315/RAX1NN (White) (SP1)\*    ECO-315/RAX1ANN (White) (SP1)\*    ECO-315/RAX2NN (Beige) (SNJ2)\*    ECO-315/RAX2ANN (Beige) (SNJ2)\*  
 ECO-315/RAX3NN (Brown) (RAX3)\*    ECO-315/RAX3ANN (Brown) (RAX3)\*    ECO-315/RAX4NN (Dark gray) (RAX4)\*    ECO-315/RAX4ANN (Dark gray) (RAX4)\*

Shape	Model number	Size	Thickness (mm)
303 x 151 mm (relief)	ECO-315/RAX1NN - RAX4NN	303 x 151.5	4.5 + 4.5
303 x 151 mm (low relief)	ECO-315/RAX1ANN - RAX4ANN	303 x 151.5	5.5
303 x 151 mm short edge glazed	ECO-3151/RAX1ANN (R) - RAX4ANN (R)	303 x 151.5	5.5

• The color codes RAX1NN - RAX4NN have a vertical orientation. Vertical installation in line with the designated installation pattern is recommended. • Mount the color codes RAX1NN - RAX4NN without cutting. The thickness may differ depending on the cutting point, and edges may become visible. • 303 x 151 mm short edge glazed pieces are prepared as corner pieces, which are recommended to be installed horizontally. • Has color variations by material, decoration, firing doneness and mixing for design purpose.

## GRANAS LUDRA A highly impressive texture suitable for accentuating a space.



ECO-2515NET/LDR1NN  
(Gray) (LDR1)\*

ECO-2515NET/LDR2NN  
(Dark gray) (LDR2)\*

ECO-2515NET/LDR3NN  
(Brown) (LDR3)\*

ECO-2515NET/LDR4NN  
(White) (SP1)\*

ECO-2515NET/LDR5NN  
(Beige) (SNJ2)\*

Shape	Model number	Nominal size	Thickness (mm)
25 x 151 mm net mounted	ECO-2515NET/LDR1NN - LDR5NN	303 x 303	6.5-8.5
90° corner net mounted	ECO-2515N/90-14/LDR1NN - LDR5NN	(37.0 + 74.8) x 303	6.5-8.5
25 x 151 mm short edge glazed net mounted	ECO-2515N1/LDR1NN - LDR5NN	189.35 x 303	6.5-8.5

- Wide variety of colors to express a natural taste.
- Because the specification of this product requires keeping approximately 1.0 mm space for vertical and horizontal joint width, the backing net and lines of adhesive may become visible.
- While the sheet has a single pattern and a designated orientation, it may be used randomly.
- As the side edges are not decorated, the color will be different from the color of the surface. Check the actual product or sample to confirm the color.
- Multiple relief tiles are mixed in this product.
- Has color variations by material, decoration, firing doneness and mixing for design purpose.

## FANCY MOSAIC A shiny look and a pattern that is a mix of three colors creates a bright and friendly atmosphere.



ECO-275NET/FAM1  
(Light gray) (SLA3)\*

ECO-275NET/FAM2  
(Sky blue) (FAM2)\*

ECO-275NET/FAM3  
(Flamingo pink) (FAM3)\*

ECO-275NET/FAM4  
(Gray beige) (J1)\*

ECO-275NET/FAM5  
(Old rose) (FAM5)\*

Shape	Model number	Nominal size	Thickness (mm)
25 x 75 mm net mounted	ECO-275NET/FAM1 - FAM5	303 x 303	7.5
90° corner net mounted	ECO-275N/90-14/FAM1 - FAM5	(28.25 + 28.25) x 303	7.5
25 x 75 mm (for corners) net mounted	ECO-275N1/FAM1 - FAM5	25.25 x 303	7.5

- Because the specification of this product requires keeping approximately 1.0 mm space for vertical and horizontal joint width, the backing net and lines of adhesive may become visible.
- The sheets have a designated orientation. The standard installation is for the white piece to be on the top left of the sheet.
- Multiple relief tiles having a pearl-like texture are mixed in this product.

## LAYER MIX Reliefs with a vintage feel produce a high-quality space.



ECO-SET/LAY1  
(White) (SP1)\*

ECO-SET/LAY2  
(Light gray) (SLA3)\*

ECO-SET/LAY3  
(Gray) (LAY3)\*

Shape	Model number	Size	Thickness (mm)
Different shape set	ECO-SET/LAY1 - LAY3	-	7.0
303 x 303 mm	ECO-303/LAY1 - LAY3	303 x 303	7.0
303 x 303 mm one edge touched-up	ECO-3031T/LAY1 - LAY3	303 x 303	7.0
303 x 151 mm	ECO-315/LAY1 - LAY3	303 x 151.5	7.0
303 x 151 mm long edge touched-up	ECO-3151T/LAY1 (U) - LAY3 (U)	303 x 151.5	7.0
303 x 151 mm short edge touched-up	ECO-3151T/LAY1 (R) - LAY3 (R)	303 x 151.5	7.0
151 x 151 mm	ECO-151/LAY1 - LAY3	151.5 x 151.5	7.0
151 x 151 mm one edge touched-up	ECO-1511T/LAY1 - LAY3	151.5 x 151.5	7.0

- Wide variety of colors to express a natural taste.
- A touch up finish is applied to the edge surface of one edge touched-up pieces.
- The different shape set cannot be shipped in bulk. Use 303 x 303 mm, 303 x 151 mm, and 151 x 151 mm shapes.
- Has color variations by material, decoration, firing doneness and mixing for design purpose.

## QUILT A design that combines together reliefs of cloth having a different weave. Recommended for accentuating bedrooms, etc.



ECO-60NET/QLT1  
(White) (SP1)\*

ECO-60NET/QLT2  
(Gray beige) (QLT2)\*

Shape	Model number	Size	Thickness (mm)
60 x 60 mm net mounted	ECO-60NET/QLT1 - QLT2	303 x 303	6.0•9.0
90°corner net mounted	ECO-60N/90-14/QLT1 - QLT2	(60.6 + 60.6) x 303	6.0
60 x 60 mm (for corners) net mounted	ECO-60N1/QLT1 - QLT2	60.6 x 303	6.0

- Wide variety of colors to express a natural taste. • The sheets have a designated orientation. The standard installation is for the thick piece to be on the top right of the sheet.
- As the side edges are not decorated, the color will be different from the color of the surface. Check the actual product or sample to confirm the color. • Multiple relief tiles are mixed in this product. • Has color variations by material, decoration, firing doneness and mixing for design purpose.

## LAND - EARTH FINISH - A natural space is produced by an earth-like feel of material.



ECO-275NET/PLD1NN  
(Ivory) (SP1)\*

ECO-275NET/PLD2NN  
(Beige) (H4)\*

Shape	Model number	Nominal size	Thickness (mm)
25 x 75 mm net mounted	ECO-275NET/PLD1NN - PLD2NN	303 x 303	6.0•8.5
90°corner net mounted	ECO-275N/90-14/PLD1NN - PLD2NN	(34.4 + 72.25) x 303	6.0
25 x 75 mm short edge glazed net mounted	ECO-275N1/PLD1NN - PLD2NN	75.75 x 303	6.0

- Wide variety of colors to express a natural taste. • Because the specification of this product requires keeping approximately 1.0 mm space for vertical and horizontal joint width, the backing net and lines of adhesive may become visible. • As the side edges are not decorated, the color will be different from the color of the surface. Check the actual product or sample to confirm the color. • Multiple relief tiles are mixed in this product. • Has color variations by material, decoration, firing doneness and mixing for design purpose.

## LAND - STRIPPED STONE FINISH- Beautiful shades are represented through stripped stone-finish mosaic. Recommended for accentuating living rooms.



ECO-275NET/RO1NN  
(Ivory) (RO1)\*

ECO-275NET/RO2NN  
(Beige) (N2)\*

Shape	Model number	Nominal size	Thickness (mm)
25 x 75 mm net mounted	ECO-275NET/RO1NN - RO2NN	303 x 303	7.5•9.5
90°corner net mounted	ECO-275N/90-14/RO1NN - RO2NN	(37.85 + 75.75) x 303	7.5•9.5
25 x 75 mm short edge glazed net mounted	ECO-275N1/RO1NN - RO2NN	75.75 x 303	7.5•9.5

- Because the specification of this product requires keeping approximately 1.0 mm space for vertical and horizontal joint width, the backing net and lines of adhesive may become visible. • As the side edges are not decorated, the color will be different from the color of the surface. Check the actual product or sample to confirm the color. • Multiple relief tiles are mixed in this product. • Has color variations by material, decoration, firing doneness and mixing for design purpose.

## PEARL MASK

Beautiful walls are produced through a pearl-like luster and shade.



ECO-60NET/PMK1NN  
(Pearl cream) (PMK1)\*



ECO-60NET/PMK2NN  
(Pearl beige) (N4)\*

Shape	Model number	Size	Thickness (mm)
60 x 60 mm net mounted	ECO-60NET/PMK1NN - PMK2NN	303 x 303	5.5•8.5
90°corner net mounted	ECO-60N/90-14/PMK1NN - PMK2NN	(60.6 + 60.6) x 303	5.5
60 x 60 mm (for corners) net mounted	ECO-60N1/PMK1NN - PMK2NN	60.6 x 303	5.5

- The sheets have a designated orientation. The standard installation is for the thick piece to be on the top right of the sheet.
- As the side edges are not decorated, the color will be different from the color of the surface. Check the actual product or sample to confirm the color.
- Multiple relief tiles having a pearl-like texture are mixed in this product.
- Has color variations by material, decoration, firing doneness and mixing for design purpose.

## PETRASQUARE

Natural stone-like uneven design. The lighting creates walls with beautiful shades.



ECO-60NET/PTS1NN  
(Light gray) (RO1)\*



ECO-60NET/PTS2NN  
(Light beige) (N2)\*

Shape	Model number	Size	Thickness (mm)
60 x 60 mm net mounted	ECO-60NET/PTS1NN - PTS2NN	303 x 303	5.5•8.5
90°corner net mounted	ECO-60N/90-14/PTS1NN - PTS2NN	(60.6 + 60.6) x 303	5.5
60 x 60 mm (for corners) net mounted	ECO-60N1/PTS1NN - PTS2NN	60.6 x 303	5.5

- Wide variety of colors to express a natural taste.
- The sheets have a designated orientation. The standard installation is for the thick piece to be on the top right of the sheet.
- As the side edges are not decorated, the color will be different from the color of the surface. Check the actual product or sample to confirm the color.
- Multiple relief tiles are mixed in this product.
- Has color variations by material, decoration, firing doneness and mixing for design purpose.

## VELE

A design with rounded reliefs produces beautiful shades.



ECO-30NET/WE1NN  
(White) (SP1)\*



ECO-30NET/WE2NN  
(Ivory) (RO1)\*



ECO-30NET/WE3NN  
(Beige) (N2)\*

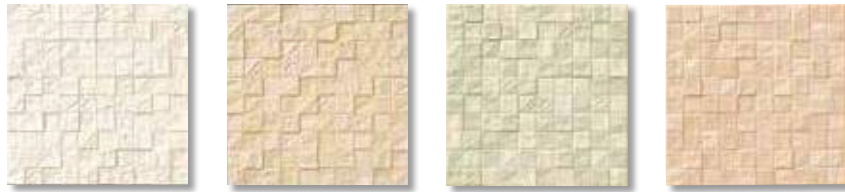


ECO-30NET/WE4NN  
(Gray) (TK3)\*

Shape	Model number	Size	Thickness (mm)
30 x 30 mm net mounted	ECO-30NET/WE1NN - WE4NN	303 x 303	4.5 + 4.0
90°corner net mounted	ECO-30N/90-14/WE1NN - WE4NN	(31.45 + 31.45) x 303	5.5
30 x 30 mm (for corners) net mounted	ECO-30N1/WE1NN - WE4NN	30.3 x 303	5.5

- While the single piece pattern has a random orientation, there are cases where the grains may have a designated orientation.
- The 90° corner / 30 x 30 mm (for corners) have a flat surface different from the surface shape of 30 x 30 mm net mounted. Due to the difference in the shape of the surface, colors may appear different depending on the lighting.
- Has color variations by material, decoration, firing doneness and mixing for design purpose.

**CASSE** An irregular design that looks like broken stones creates beautiful shades. Recommended for accentuating stores and houses.



ECO-30NET/M1NN (Ivory beige) (A1) \*      ECO-30NET/M2NN (Beige) (N2) \*      ECO-30NET/M3NN (Light green) (M3) \*      ECO-30NET/M4NN (Cotto beige) (N8) \*

Shape	Model number	Size	Thickness (mm)
30 x 30 mm net mounted	ECO-30NET/M1NN - M4NN	303 x 303	5.5 - 7.5
90° corner net mounted	ECO-30N/90-14/M1NN - M4NN	(29.8 - 31.8 + 29.8 - 31.8) x 303	5.5 - 7.5
30 x 30 mm (for corners) net mounted	ECO-30N1/M1NN - M4NN	30.3 x 303	6.5

• Wide variety of colors to express a natural taste. • Has color variations by material, decoration, firing doneness and mixing for design purpose.

**CUSCINO** Vivid colors that can be combined easily with existing colors have been added. Recommended for spaces where colors are used as accent.



ECO-151/CSN1NN (White) (SP1) \*      ECO-151/CSN2NN (Beige) (SNU2) \*      ECO-151/CSN3NN (Gray) (SLA3) \*      ECO-151/CSN4NN (Coral red) (CSN4) \*      ECO-151/CSN5NN (Blue green) (CSN5) \*

Shape	Model number	Size	Thickness (mm)
151 x 151 mm	ECO-151/CSN1NN - CSN5NN	151.5 x 151.5	4.5 + 5.5
151 x 151 mm one edge touched-up	ECO-1511T/CSN1NN - CSN5NN	151.5 x 151.5	4.5 + 5.5

• It is recommended to mount the tiles without cutting. If for some reason the tiles need to be cut, the thickness may differ depending on the cutting point, and edges may become visible. • A touch up finish is applied to the edge surface of 151 x 151 mm one edge touched-up pieces. • The color shade may vary from one production lot to another, one shape to another, and also one piece to another.

**FEMINA** Available in accent colors preferred by women. Features antique stucco-like reliefs.



ECO-303/FMN1 (White) (SP1) \*      ECO-303/FMN2 (Lavender) (FMN2) \*      ECO-303/FMN3 (Grayish blue) (FMN3) \*      ECO-303/FMN4 (Rose) (A2) \*      ECO-303/FMN5 (Mauve) (FMN5) \*      ECO-303/FMN6 (Grayish brown) (RST3) \*

Shape	Model number	Size	Thickness (mm)
303 x 303 mm	ECO-303/FMN1 - FMN6	303 x 303	5.5
303 x 303 mm one edge touched-up	ECO-3031T/FMN1 - FMN6	303 x 303	5.5

• A touch up finish is applied to the edge surface of 303 x 303 mm one edge touched-up pieces. • The color shade may vary from one production lot to another, one shape to another, and also one piece to another.

## FINE BASE

A standard series recommended for living rooms and bedrooms. Suitable for coordination with other series.



<NEW NATURAL>



ECO-303/NN0NN  
(White) (SP1)\*



ECO-303/NN1NN  
(Off-white) (N1)\*



ECO-303/NN2NN  
(Beige) (N2)\*



ECO-303/NN11  
(Light brown) (A3)\*



ECO-303/NN12  
(Gray) (TK3)\*

Shape	Model number	Size	Thickness (mm)
303 x 303 mm	ECO-303/NN0NN...NN12	303 x 303	5.5
303 x 303 mm one edge touched-up	ECO-3031T/NN0NN...NN12	303 x 303	5.5

• A touch up finish is applied to the edge surface of 303 x 303 mm one edge touched-up pieces. • Has color variations by material, decoration, firing doneness and mixing for design purpose.

## FINE BASE

A standard series recommended for living rooms and bedrooms. Suitable for coordination with other series.



<SIMPLE>



ECO-303/F1WNN  
(Flat) (SP1)\*



ECO-303/R1NN  
(Rib) (SP1)\*

Close-up of surface



F1WNN (Flat) Enlarged view



R1NN (Rib) Enlarged view  
Ribbed pattern with thin lines.  
Can be installed both vertically and horizontally.

Shape	Model number	Size	Thickness (mm)
303 x 303 mm	ECO-303/F1WNN-R1NN	303 x 303	5.5
303 x 303 mm one edge touched-up	ECO-3031T/F1WNN	303 x 303	5.5
303 x 303 mm upper edge touched-up	ECO-3031T/R1NN (U)	303 x 303	5.5
303 x 303 mm right edge touched-up	ECO-3031T/R1NN (R)	303 x 303	5.5

• Since the reliefs have a designated orientation in the color code R1NN, the design appears different during horizontal installation and vertical installation. Please check actual tiles and consider which orientation to use. • The corner pieces of the color code R1NN are set using the horizontal installation as a standard. • A touch up finish is applied to the edge surface of 303 x 303 mm one edge touched-up pieces. • Has color variations by material, decoration, firing doneness and mixing for design purpose.

## SPLINE

The smooth curve and bright expression creates an elegant space.



ECO-303/SPN1NN  
(White) (SP1)\*



ECO-303/SPN2NN  
(Beige) (SNJ2)\*



ECO-303/SPN3NN  
(Light rose) (J4)\*



ECO-303/SPN4NN  
(Light green) (SPN4)\*

Shape	Model number	Size	Thickness (mm)
303 x 303 mm	ECO-303/SPN1NN - SPN4NN	303 x 303	5.5
303 x 303 mm upper edge touched-up	ECO-3031T/SPN1NN (U) - SPN4NN (U)	303 x 303	5.5
303 x 303 mm right edge touched-up	ECO-3031T/SPN1NN (R) - SPN4NN (R)	303 x 303	5.5

• Since the reliefs have a designated orientation, the design appears different during horizontal installation and vertical installation. Please check actual tiles and consider which orientation to use. • Horizontal installation, in line with the relief pattern, is recommended. The corner pieces are set using the horizontal installation as a standard. • A touch up finish is applied to the edge surface of 303 x 303 mm one edge touched-up pieces. • Has color variations by material, decoration, firing doneness and mixing for design purpose.

## SILKLINE

The shining fine line creates a gentle space.



ECO-303/SLA1NN  
(White) (SP1)\*



ECO-303/SLA2NN  
(Beige) (N2)\*



ECO-303/SLA3NN  
(Gray) (SLA3)\*

Shape	Model number	Size	Thickness (mm)
303 x 303 mm	ECO-303/SLA1NN - SLA3NN	303 x 303	5.5
303 x 303 mm upper edge touched-up	ECO-3031T/SLA1NN (U) - SLA3NN (U)	303 x 303	5.5
303 x 303 mm right edge touched-up	ECO-3031T/SLA1NN (R) - SLA3NN (R)	303 x 303	5.5

• The design pattern has a designated orientation. Therefore, the design appears different during horizontal installation and vertical installation. Please check actual tiles and consider which orientation to use. • Horizontal installation, in line with the design pattern, is recommended. The corner pieces are set using the horizontal installation as a standard. • A touch up finish is applied to the edge surface of 303 x 303 mm one edge touched-up pieces. • The color shade may vary from one production lot to another, one shape to another, and also one piece to another.

## TAKEHIGO

This series matches a Japanese modern space. The texture and feel also match a Western-style room.



ECO-303/TK1NN  
(White) (SP1)\*



ECO-303/TK2NN  
(Light beige) (N1)\*



ECO-303/TK3NN  
(Gray) (TK3)\*

Shape	Model number	Size	Thickness (mm)
303 x 303 mm	ECO-303/TK1NN - TK3NN	303 x 303	5.5
303 x 303 mm upper edge touched-up	ECO-3031T/TK1NN (U) - TK3NN (U)	303 x 303	5.5
303 x 303 mm right edge touched-up	ECO-3031T/TK1NN (R) - TK3NN (R)	303 x 303	5.5

• The hollowed design has bamboo motifs on the reliefs. • Since the reliefs have a designated orientation, the design appears different during horizontal installation and vertical installation. Please check actual tiles and consider which orientation to use. • The corner pieces are set using the horizontal installation as a standard. • A touch up finish is applied to the edge surface of 303 x 303 mm one edge touched-up pieces. • The color shade may vary from one production lot to another, one shape to another, and also one piece to another.

## NEW JURAKU

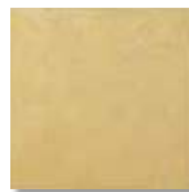
The warm looks that are an amalgamation of the taste of pottery and texture of mud walls match not only Japanese-style room, but also Western-style room.



ECO-303/NJ1NN (Sand beige) (J1)\*



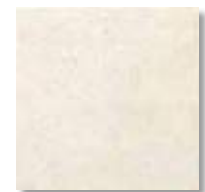
ECO-303/NJ3NN (Olive gray) (J3)\*



ECO-303/NJ6NN (Golden brown) (J6)\*



ECO-303/NJ8NN (Charcoal brown) (J8)\*



ECO-303/NJ9NN (Snow white) (J9)\*

Shape	Model number	Size	Thickness (mm)
303 x 303 mm	ECO-303/NJ1NN...NJ9NN	303 x 303	5.5
303 x 303 mm one edge touched-up	ECO-3031T/NJ1NN...NJ9NN	303 x 303	5.5

• Wide variety of colors to express a natural taste. • A touch up finish is applied to the edge surface of 303 x 303 mm one edge touched-up pieces. • Has color variations by material, decoration, firing doneness and mixing for design purpose.



"Simple Cleaning"

is an added feature of ECOCARAT.

Since dirt does not adhere easily to it, it is recommended for locations where water may splash, like powder rooms and toilets.

**ECOCARAT<sup>+</sup>**

# List of products

## G Series

**R SLIT**  
ECP-630

→P80



RST1 (White)



RST2 (Gray)



RST3 (Dark gray)

**GRANAS VAGUE**  
ECP-315

→P80



VAG1 (White)



VAG1A (White)



VAG2 (Gray)



VAG2A (Gray)



VAG3 (Dark gray)



VAG3A (Dark gray)

**GRANAS HART**  
ECP-250

→P80



HRT1 (White)

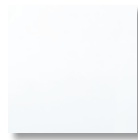


HRT2 (Gray)

## S Series

**SPRING AIR**  
ECP-630

→P81



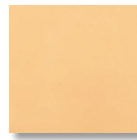
AIR1 (White)



AIR2 (Gray)



AIR3 (Yellow)



AIR4 (Orange)



AIR5 (Red)



AIR6 (Green)

**CUSCINO**  
ECP-151

→P81



CSN1N (White)



CSN2N (Beige)



CSN3N (Gray)



CSN4N (Coral red)



CSN5N (Blue green)

**ROUGHSAWN**  
ECP-275NET

→P81



RGS1 (White)



RGS2 (Beige)



RGS3 (Light brown)

**SHAILY**  
ECP-30NET

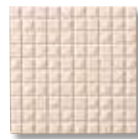
→P82



SHY1 (White)



SHY2 (Beige)



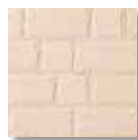
SHY3 (Pink beige)

**ROCK II**  
ECP-SET2

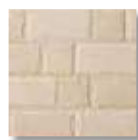
→P82



RCK1 (White)



RCK2 (Pink beige)



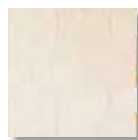
RCK3 (Beige)



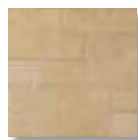
RCK4 (Ash green)

**STONE II**  
ECP-SETA

→P82



STN1 (Ivory)



STN2 (Beige)



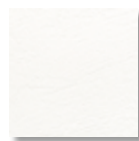
STN3 (Gray)

F Series

FEMINA

ECP-303

→P83



FMN1N (White)



FMN2N (Lavender)



FMN3N (Grayish blue)



FMN4N (Rose)



FMN5N (Mauve)



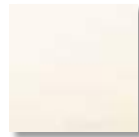
FMN6N (Grayish brown)

TRAVERTINE

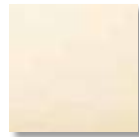
ECP-345

ECP-303

→P83



TRV1 (White)



TRV2 (Beige)



TRV3 (Gray)



ARE1N (White)



ARE2N (Beige)



ARE3N (Gray)

ARECHE

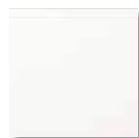
ECP-303

→P83

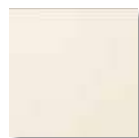
NUNOGARA

ECP-303

→P84



NU1N (White)



NU2N (Beige)



NU3N (Yellow beige)



NU4N (Pink beige)



NU5N (Brown)

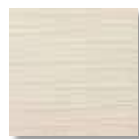
SPLINE

ECP-303

→P84



SPN1N (White)



SPN2N (Beige)



SPN3N (Light rose)



SPN4N (Light green)

SILKLINE

ECP-303

→P84



SLA1N (White)



SLA2N (Beige)

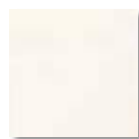


SLA3N (Gray)

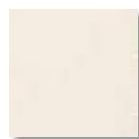
TAKEHIGO

ECP-303

→P85



TK1N (White)



TK2N (Light beige)



TK3N (Gray)

## R SLIT

The continuous striped reliefs generate shadows, and produce a stylish space.



ECP-630/RST1 (White) (SP1)\*



ECP-630/RST2 (Gray) (RST2)\*



ECP-630/RST3 (Dark gray) (RST3)\*

Shape	Model number	Nominal size	Thickness (mm)
606 x 303 mm	ECP-630/RST1 - RST3	606 x 303	10.0
12Y wall partition	SM-2700Y/S-12	-	-
12C wall partition	SM-2700C/S-12	-	-

- Because the specification of this product requires keeping approximately 1.0 mm space for vertical and horizontal joint width, the lines of adhesive may become visible.
- Use a 12Y wall partition for the outer corners, and mount it properly.
- Use a 12C wall partition for the inner corners, and mount it properly.
- The 12Y and 12C wall partitions are made of aluminum, and have only one color (silver).
- In the case of vertical installation, as the side edges are not decorated in models with dark color, the color will be significantly different from the color of the surface. Horizontal installation is recommended for this product.
- The color shade may vary from one production lot to another, one shape to another, and also one piece to another.

## GRANAS VAGUE

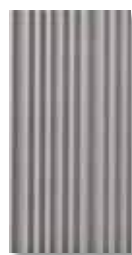
The continuous curved surface generates a rhythm on the walls and produces a striking space.



ECP-315/VAG1 (White) (SP1)\*



ECP-315/VAG1A (White) (SP1)\*



ECP-315/VAG2 (Gray) (RAX4)\*



ECP-315/VAG2A (Gray) (RAX4)\*



ECP-315/VAG3 (Dark gray) (VAG3)\*



ECP-315/VAG3A (Dark gray) (VAG3)\*

Shape	Model number	Size	Thickness (mm)
303 x 151 mm (relief)	ECP-315/VAG1 - VAG3	303 x 151.5	9.0
303 x 151 mm (low relief)	ECP-315/VAG1A - VAG3A	303 x 151.5	6.0
303 x 151 mm long edge glazed	ECP-3151/VAG1A (R) - VAG3A (R)	303 x 151.5	6.0

- Mount the color codes VAG1 - VAG3 without cutting. The thickness may differ depending on the cutting point, and edges may become visible.
- 303 x 151 mm long edge glazed pieces are prepared as corner pieces, which are recommended to be installed vertically.
- Has color variations by material, decoration, firing doneness and mixing for design purpose.

## GRANAS HART

A design with brick walls as the motif. Recommended for producing natural-looking spaces.



ECP-250/HRT1 (White) (SP1)\*



ECP-250/HRT2 (Gray) (HRT2)\*

Shape	Model number	Size	Thickness (mm)
202 x 50 mm	ECP-250/HRT1 - HRT2	201 x 49.5	7.5+9.0
(151 + 50) x 50 corner	ECP-2501/90-14/HRT1 - HRT2	(148.0 + 47.0) / (149.5 + 48.5) x 49.5	7.5+9.0

- Wide variety of colors to express a natural taste.
- Because the specification of this product requires keeping approximately 1.0 mm space for vertical and horizontal joint width, the lines of adhesive may become visible.
- Has color variations by material, decoration, firing doneness and mixing for design purpose.

## SPRING AIR

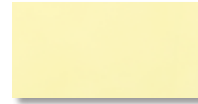
A large-size product having color tones that stand out in public spaces. Produces simple and bright spaces.



ECP-630/AIR1  
(White) (SP1)\*



ECP-630/AIR2  
(Gray) (AIR2)\*



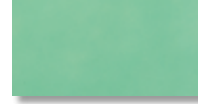
ECP-630/AIR3  
(Yellow) (AIR3)\*



ECP-630/AIR4  
(Orange) (AIR4)\*



ECP-630/AIR5  
(Red) (AIR5)\*



ECP-630/AIR6  
(Green) (AIR6)\*

Shape	Model number	Nominal size	Thickness (mm)
606 x 303 mm	ECP-630/AIR1 - AIR6	606 x 303	7.0
606 x 303 mm right edge glazed	ECP-6301T/AIR1 (R) - AIR6 (R)	606 x 303	7.0
303 x 303 mm right edge glazed	ECP-3031T/AIR1 (R) - AIR6 (R)	303 x 303	7.0

- Because the specification of this product requires keeping approximately 1.0 mm space for vertical and horizontal joint width, the lines of adhesive may become visible.
- The color shade may vary from one production lot to another, one shape to another, and also one piece to another.

## CUSCINO

The puffed-up reliefs produce a gentle space in kindergartens and nursing homes, etc.



ECP-151/CSN1N  
(White) (SP1)\*



ECP-151/CSN2N  
(Beige) (SNJ2)\*



ECP-151/CSN3N  
(Gray) (SLA3)\*



ECP-151/CSN4N  
(Coral red) (CSN4)\*



ECP-151/CSN5N  
(Blue green) (CSN5)\*

Shape	Model number	Size	Thickness (mm)
151 x 151 mm	ECP-151/CSN1N - CSN5N	151.5 x 151.5	4.5 + 5.5
151 x 151 mm one edge touched-up	ECP-1511T/CSN1N - CSN5N	151.5 x 151.5	4.5 + 5.5

- It is recommended to mount the tiles without cutting. If for some reason the tiles need to be cut, the thickness may differ depending on the cutting point, and edges may become visible. • A touch up finish is applied to the edge surface of 151 x 151 mm one edge touched-up pieces. • The color shade may vary from one production lot to another, one shape to another, and also one piece to another.

## ROUGHSAWN

Features reliefs having a finish that appears as if wood has been cut roughly. Recommended for serene spaces such as bedrooms.



ECP-275NET/RGS1  
(White) (SP1)\*



ECP-275NET/RGS2  
(Beige) (N2)\*



ECP-275NET/RGS3  
(Light brown) (RGS3)\*

Shape	Model number	Nominal size	Thickness (mm)
25 x 75 mm net mounted	ECP-275NET/RGS1 - RGS3	303 x 303	6.0•8.5
90°corner net mounted	ECP-275N/90-14/RGS1 - RGS3	(25.25 + 25.25) x 303	6.0
25 x 75 mm long side net mounted	ECP-275N1/RGS1 - RGS3	25.25 x 303	6.0

- Wide variety of colors to express a natural taste. • Because the specification of this product requires keeping approximately 1.0 mm space for vertical and horizontal joint width, the backing net and lines of adhesive may become visible. • As the side edges are not decorated, the color will be different from the color of the surface. Check the actual product or sample to confirm the color. • Multiple relief tiles are mixed in this product. • Vertical installation is recommended. The corner pieces are set using the vertical installation as a standard. • Has color variations by material, decoration, firing doneness and mixing for design purpose.

## SHAILY

Features geometrical reliefs with jewel stones as motifs. Lightly brightens up spaces.



ECP-30NET/SHY1 (White) (SP1)\*



ECP-30NET/SHY2 (Beige) (PMK1)\*



ECP-30NET/SHY3 (Pink beige) (A1)\*

Shape	Model number	Size	Thickness (mm)
30 x 30 mm net mounted	ECP-30NET/SHY1 - SHY3	303 x 303	7.0 - 8.5
90° corner net mounted	ECP-30N/90-14/SHY1 - SHY3	(31.45 x 31.45) x 303	5.5
30 x 30 mm (for corners) net mounted	ECP-30N1/SHY1 - SHY3	30.3 x 303	5.5

- While the single piece pattern has a random orientation, there are cases where the same grains may be arranged.
- The 90° corner / 30 x 30 mm (for corners) have a flat surface different from the surface shape of 30 x 30 mm net mounted. Due to the difference in the shape of the surface, colors may appear different depending on the lighting.
- Has color variations by material, decoration, firing doneness and mixing for design purpose.

## ROCK II

A design using chipping stones as motifs brings out space.



ECP-SET2/RCK1 (White) (SP1)\*



ECP-SET2/RCK2 (Pink beige) (A2)\*



ECP-SET2/RCK3 (Beige) (VIT2)\*



ECP-SET2/RCK4 (Ash green) (RCK4)\*

- Wide variety of colors to express a natural taste.
- Surfaces and patterns have a designated orientation. It is recommended for 303 x 151 mm to be installed downward to the right and 151 x 151 mm upward to the right.
- A touch up finish is applied to the edge surface of one edge touched-up pieces.
- The different shape set cannot be shipped in bulk. Use 303 x 151 mm and 151 x 151 mm shapes.
- Has color variations by material, decoration, firing doneness and mixing for design purpose.

Shape	Model number	Size	Thickness (mm)
Different shape set	ECP-SET2/RCK1 - RCK4	-	7.0
303 x 151 mm	ECP-315/RCK1 - RCK4	303 x 151.5	7.0
303 x 151 mm short edge touched-up	ECP-3151T/RCK1 (R) - RCK4 (R)	303 x 151.5	7.0
303 x 151 mm long edge touched-up	ECP-3151T/RCK1 (U) - RCK4 (U)	303 x 151.5	7.0
227.25 x 151 mm short edge touched-up	ECP-1521T/RCK1 (R) - RCK4 (R)	227.25 x 151.5	7.0
151 x 151 mm	ECP-151/RCK1 - RCK4	151.5 x 151.5	7.0
151 x 151 mm one edge touched-up	ECP-1511T/RCK1 - RCK4	151.5 x 151.5	7.0

## STONE II

The natural masonry design produces a high quality space.



ECP-SETA/STN1 (Ivory) (VIT1)\*



ECP-SETA/STN2 (Beige) (VIT2)\*

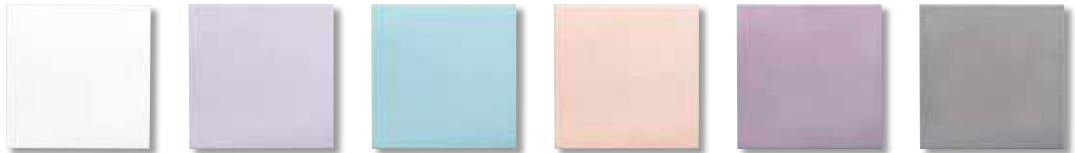


ECP-SETA/STN3 (Gray) (STN3)\*

- Wide variety of colors to express a natural taste.
- Surfaces and patterns have a designated orientation. It is recommended that they are installed so that the pattern flows upwards and to the right. However, for the 303 x 151 mm and mounting parts of Pattern C, the pattern may flow downwards to the right.
- A touch up finish is applied to the edge surface of one edge touched-up pieces.
- The different shape sets (A) (B) (C) cannot be shipped in bulk. Use 303 x 303 mm, 303 x 151 mm, and 151 x 151 mm shapes.
- Has color variations by material, decoration, firing doneness and mixing for design purpose.

Shape	Model number	Size	Thickness (mm)
Different shape set (A)	ECP-SETA/STN1 - STN3	-	7.0
Different shape set (B)	ECP-SETB/STN1 - STN3	-	7.0
Different shape set (C)	ECP-SETC/STN1 - STN3	-	7.0
303 x 303 mm	ECP-303/STN1 - STN3	303 x 303	7.0
303 x 303 mm one edge touched-up	ECP-3031T/STN1 - STN3	303 x 303	7.0
303 x 151 mm	ECP-315/STN1 - STN3	303 x 151.5	7.0
303 x 151 mm long edge touched-up	ECP-3151T/STN1 (R) - STN3 (R)	303 x 151.5	7.0
303 x 151 mm short edge touched-up	ECP-3151T/STN1 (U) - STN3 (U)	303 x 151.5	7.0
151 x 151 mm	ECP-151/STN1 - STN3	151.5 x 151.5	7.0
151 x 151 mm one edge touched-up	ECP-1511T/STN1 - STN3	151.5 x 151.5	7.0

**FEMINA** Available in accent colors preferred by women.  
Recommended for use in wide range of spaces including locations exposed to water and public spaces.



ECP-303/FMN1N (White) (SP1)\*      ECP-303/FMN2N (Lavender) (FMN2)\*      ECP-303/FMN3N (Grayish blue) (FMN3)\*      ECP-303/FMN4N (Rose) (A2)\*      ECP-303/FMN5N (Mauve) (FMN5)\*      ECP-03/FMN6N (Grayish brown) (RST3)\*

Shape	Model number	Size	Thickness (mm)
303 x 303 mm	ECP-303/FMN1N - FMN6N	303 x 303	5.5
303 x 303 mm one edge touched-up	ECP-3031T/FMN1N - FMN6N	303 x 303	5.5

• A touch up finish is applied to the edge surface of 303 x 303 mm one edge touched-up pieces. • The color shade may vary from one production lot to another, one shape to another, and also one piece to another.

**TRAVERTINE** The easy to use stone pattern creates a natural wall.



ECP-345/TRV1 (White) (H1)\*      ECP-345/TRV2 (Beige) (N2)\*      ECP-345/TRV3 (Gray) (SLA3)\*

Shape	Model number	Size	Thickness (mm)
303 x 303 mm	ECP-303/TRV1 - TRV3	303 x 303	5.5
303 x 303 mm right edge touched-up	ECP-3031T/TRV1 (R) - TRV3 (R)	303 x 303	5.5
303 x 455 mm	ECP-345/TRV1 - TRV3	303 x 455	5.5
303 x 455 mm right edge touched-up	ECP-3451T/TRV1 (R) - TRV3 (R)	303 x 455	5.5
303 x 227.5 mm right edge touched-up	ECP-3221T/TRV1 (R) - TRV3 (R)	303 x 227.5	5.5

• A pattern design is provided here and there to give the feel of natural stone. • Surfaces and design patterns have a designated orientation. It is recommended to install them by aligning the color number symbol in the back at the bottom. • Horizontal installation, in line with the design pattern, is recommended. The corner pieces are set using the horizontal installation as a standard. • A touch up finish is applied to the edge surface of one edge touched-up pieces. • Has color variations by material, decoration, firing doneness and mixing for design purpose.

**ARECHE** A high quality space can be produced from reliefs in which flat and rough surfaces are mixed.



ECP-303/ARE1N (White) (H1)\*      ECP-303/ARE2N (Beige) (N2)\*      ECP-303/ARE3N (Gray) (SLA3)\*

Shape	Model number	Size	Thickness (mm)
303 x 303 mm	ECP-303/ARE1N - ARE3N	303 x 303	6.5
303 x 303 mm upper edge touched-up	ECP-3031T/ARE1N (U) - ARE3N (U)	303 x 303	6.5
303 x 303 mm right edge touched-up	ECP-3031T/ARE1N (R) - ARE3N (R)	303 x 303	6.5

• A pattern design is provided here and there to give the feel of natural stone. • Reliefs have a designated orientation. It is recommended to install them by aligning the color number symbol in the back at the bottom. • Horizontal installation, in line with the relief pattern, is recommended. The corner pieces are set using the horizontal installation as a standard. • A touch up finish is applied to the edge surface of 303 x 303 mm one edge touched-up pieces. • Has color variations by material, decoration, firing doneness and mixing for design purpose.

## NUNOGARA

The fabric pattern design is easy to coordinate with interiors.



ECP-303/NU1N (White) (N1)\*      ECP-303/NU2N (Beige) (SNJ2)\*      ECP-303/NU3N (Yellow beige) (A3)\*      ECP-303/NU4N (Pink beige) (A2)\*      ECP-303/NU5N (Brown) (NU5)\*

Shape	Model number	Size	Thickness (mm)
303 x 303 mm	ECP-303/NU1N - NU5N	303 x 303	5.5
303 x 303 mm upper edge touched-up	ECP-3031T/NU1N (U) - NU5N (U)	303 x 303	5.5
303 x 303 mm right edge touched-up	ECP-3031T/NU1N (R) - NU5N (R)	303 x 303	5.5

- The design pattern has a designated orientation. Therefore, the design appears different during horizontal installation and vertical installation. Please check actual tiles and consider which orientation to use. • Horizontal installation, in line with the design pattern, is recommended. The corner pieces are set using the horizontal installation as a standard.
- A touch up finish is applied to the edge surface of 303 x 303 mm one edge touched-up pieces. • Has color variations by material, decoration, firing doneness and mixing for design purpose.

## SPLINE

The smooth curve and bright expression creates an elegant space.



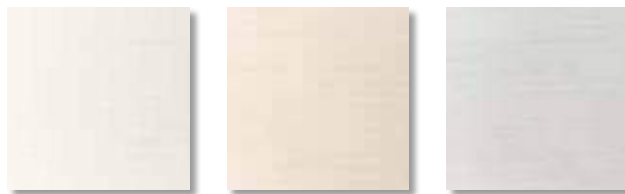
ECP-303/SPN1N (White) (SP1)\*      ECP-303/SPN2N (Beige) (SNJ2)\*      ECP-303/SPN3N (Light rose) (J4)\*      ECP-303/SPN4N (Light green) (SPN4)\*

Shape	Model number	Size	Thickness (mm)
303 x 303 mm	ECP-303/SPN1N - SPN4N	303 x 303	5.5
303 x 303 mm upper edge touched-up	ECP-3031T/SPN1N (U) - SPN4N (U)	303 x 303	5.5
303 x 303 mm right edge touched-up	ECP-3031T/SPN1N (R) - SPN4N (R)	303 x 303	5.5

- Since the reliefs have a designated orientation, the design appears different during horizontal installation and vertical installation. Please check actual tiles and consider which orientation to use. • Horizontal installation, in line with the relief pattern, is recommended. The corner pieces are set using the horizontal installation as a standard. • A touch up finish is applied to the edge surface of 303 x 303 mm one edge touched-up pieces. • Has color variations by material, decoration, firing doneness and mixing for design purpose.

## SILKLINE

The shining fine line creates a gentle space.



ECP-303/SLA1N (White) (SP1)\*      ECP-303/SLA2N (Beige) (N2)\*      ECP-303/SLA3N (Gray) (SLA3)\*

Shape	Model number	Size	Thickness (mm)
303 x 303 mm	ECP-303/SLA1N - SLA3N	303 x 303	5.5
303 x 303 mm upper edge touched-up	ECP-3031T/SLA1N (U) - SLA3N (U)	303 x 303	5.5
303 x 303 mm right edge touched-up	ECP-3031T/SLA1N (R) - SLA3N (R)	303 x 303	5.5

- The design pattern has a designated orientation. Therefore, the design appears different during horizontal installation and vertical installation. Please check actual tiles and consider which orientation to use. • Horizontal installation, in line with the design pattern, is recommended. The corner pieces are set using the horizontal installation as a standard. • A touch up finish is applied to the edge surface of 303 x 303 mm one edge touched-up pieces. • The color shade may vary from one production lot to another, one shape to another, and also one piece to another.

# TAKEHIGO

This series matches a Japanese modern space. The texture and feel also match a Western-style room.



ECP-303/TK1N (White)  
(SP1)\*



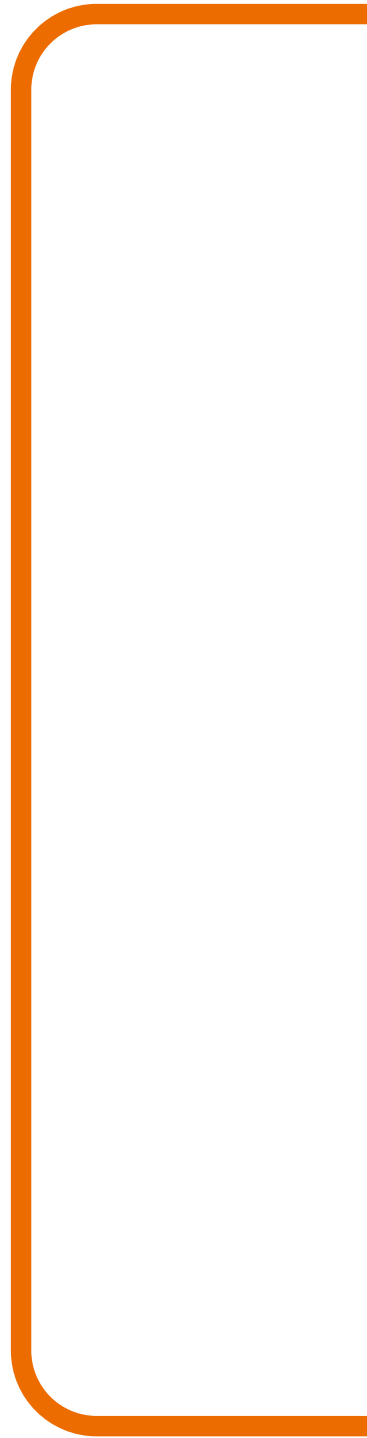
ECP-303/TK2N (Light beige)  
(N1)\*



ECP-303/TK3N (Gray)  
(TK3)\*

Shape	Model number	Size	Thickness (mm)
303 x 303 mm	ECP-303/TK1N - TK3N	303 x 303	5.5
303 x 303 mm upper edge touched-up	ECP-3031T/TK1N (U) - TK3N (U)	303 x 303	5.5
303 x 303 mm right edge touched-up	ECP-3031T/TK1N (R) - TK3N (R)	303 x 303	5.5

• The hollowed design has bamboo motifs on the reliefs. • Since the reliefs have a designated orientation, the design appears different during horizontal installation and vertical installation. Please check actual tiles and consider which orientation to use. • The corner pieces are set using the horizontal installation as a standard. • A touch up finish is applied to the edge surface of 303 x 303 mm one edge touched-up pieces. • The color shade may vary from one production lot to another, one shape to another, and also one piece to another.



**INFO.**

# Before using ECOCARAT / ECOCARAT PLUS

\* Important information. Please read.

## Common Precautions

- It is recommended to use "ECOCARAT PLUS" with improved cleaning performance at places where water splashing and dirt may be issues of concern.
  - For use in public toilets or powder rooms where occasionally water may splash in commercial facilities, we recommend using "ECOCARAT PLUS" with improved cleaning performance.
- <Common for ECOCARAT / ECOCARAT PLUS>
- Cannot be used in bathrooms and kitchen backsplash. Please check below for locations where ECOCARAT and ECOCARAT PLUS can be installed.
  - The F Series can also be used on indoor ceilings (cannot be used on ceilings in kitchens and bathrooms).
  - Depending on the condition of the base (unevenness, etc.), a gap of a few mm may happen between base and ECOCARAT sheets.
  - Since a gap of approx. 0.5 to 1 mm is provided during installation on an RC base, the finished image may be slightly different from the installation photograph.
  - In an environment where humidification of a room is performed continuously, such as when a gas stove is burned in a building made of RC, where the thermal insulation of walls is not performed sufficiently and the level of airtightness is high, it may be difficult to control dew condensation on the walls only by installing ECOCARAT. Other methods must also be examined together.
  - Depending on the usage conditions of the room, weather or ventilation conditions, etc., ECOCARAT may not be able to exhibit a sufficient effect.
  - We cannot guarantee against the occurrence or multiplication of molds and mites. In places with poor ventilation, periodically open windows, etc. to let in fresh air. In the case of occurrence of molds, we recommend performing maintenance using chlorine bleach.
  - Do not use a tape with a strong adhesion power, such as a curing tape, as it may damage the surface.
  - Lay out sheets in the sheet unit.
  - The color tone and appearance of "CUSCINO", "FEMINA", "SPLINE", "SILKLINE", and "TAKEHIGO" may be different in ECOCARAT and ECOCARAT PLUS. Check the actual product or sample to confirm the color and appearance.
  - Be particularly careful when using color codes having white as the predominant color as they are more susceptible to getting dirty.
- <ECOCARAT PLUS only>
- Cannot be used at locations that are directly exposed to water from a water supply, and locations where splashing or collection of water may occur at all times.
  - When used on the spandrel wall of public toilets, etc., the surface may become scratched or dirty upon contact during cleaning of the floor surface with a mop, etc. Be sure to insert a skirting board (height 100 mm or more) to avoid contact with cleaning tools such as mops, etc.
  - If the edges become dirty, clean promptly using a toothbrush dipped in household detergent. It may not be possible to clean some stains.

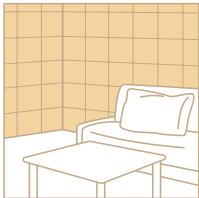


## Locations where ECOCARAT and ECOCARAT PLUS can be installed

\* ECOCARAT can be installed on inner walls and ceilings that are not exposed to water.  
\* It is recommended to use "ECOCARAT PLUS" at places where water splashing and dirt may be issues of concern.

<Only ECOCARAT PLUS can be used>

Living room

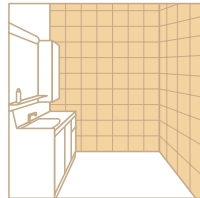


Toilet



ECOCARAT PLUS is recommended.

Powder room

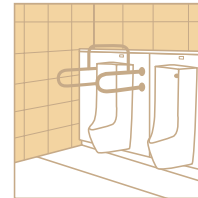


Powder room (Back surface of face and hand washing area)



\* Cannot be used when the washing counter does not have a raised surface and water gets collected all the time in the portions that are in contact with the wall surface.

Walls of public toilets



\* Be sure to insert a skirting board in the surface that is in contact with the floor surface to avoid contact with cleaning tools such as mops, etc.

Entrance wall



Corridor wall



Kitchen



## Locations where ECOCARAT and ECOCARAT PLUS cannot be installed

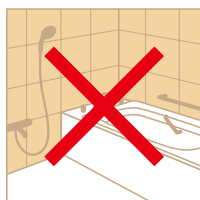
\* ECOCARAT cannot be installed at locations that are exposed to water.

<Only ECOCARAT cannot be installed>

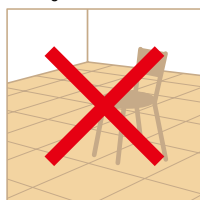
Outdoors



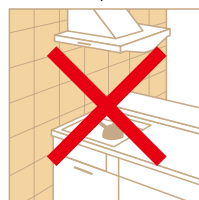
Bathroom



Flooring



Kitchen backsplash



Back surface of face and hand washing area



Use ECOCARAT PLUS.

Spandrel walls of public toilets



Use ECOCARAT PLUS.

# Cautions when using ECOCARAT / ECOCARAT PLUS

\* Important information. Please read.

## To enjoy the best performance of the product

ECOCARAT / ECOCARAT PLUS is a wall that performs “humidity control”, “odor absorption” and “harmful chemical substances absorption” with the power of the material itself. To enjoy the best performance of the product, please note the following.

### Regular ventilation is necessary.



It is recommended to ventilate rooms on fine and non-humid days in order to exert the functions of ECOCARAT / ECOCARAT PLUS to the maximum. Ventilation is also said to be effective for removing humidity and harmful substances.

### Avoid excess humidification.



Please note that performing excessive humidification will prevent the product from performing at its best. Also, do not use a humidifier that exposes the product to direct steam.

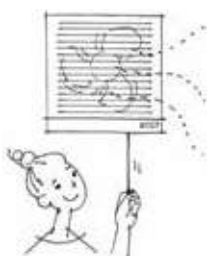
### Minimize the use of objects that may be a source of harmful substances.



Besides building materials, many things around us can be a source of chemical substances. Please note that if the volatilization volume exceeds the absorption capacity of ECOCARAT / ECOCARAT PLUS, all functions may not be performed to the best level.

## Special cautions when using this product

### After installation, be sure to ventilate the room frequently for the first 1 to 2 weeks.



After installation, the moisture contained in adhesives is discharged to the air and the humidity level in rooms may become high for a period of time.

### Avoid clothes and curtains from rubbing against the product's surface.



The unevenness of the surface of ECOCARAT / ECOCARAT PLUS may damage clothes.

### Do not scratch with objects having pointed tips.



The surface may be scratched or scraped.

### Do not hammer nails or screws.



Direct hammering may cause cracks or damage. Please use an electric screwdriver when installing hooks or screws.

For details, please consult with your contractor.

## Recommended Installation area of ECOCARAT / ECOCARAT PLUS

To achieve the effect of humidity control in an entire space, it is recommended to install ECOCARAT / ECOCARAT PLUS on a wall surface area that is at least 1/4th of the floor surface area of the space.

Room to use	Living room	Bedroom	Children's room	Powder room	Toilet
	12 mats (approx. 19.4 m <sup>2</sup> )	8 mats (approx. 13.0 m <sup>2</sup> )	6 mats (approx. 9.7 m <sup>2</sup> )	2 mats (approx. 3.3 m <sup>2</sup> )	1 mat (approx. 1.6 m <sup>2</sup> )
Standard installation surface area	4 to 6 m <sup>2</sup>	3 to 4 m <sup>2</sup>	2 to 3 m <sup>2</sup>	1 to 2 m <sup>2</sup>	1 m <sup>2</sup>

\* Calculated on the basis of a ceiling height of 2.5 m.

\* The recommended surface area is only a reference value, and the effect after installation is not guaranteed for any customer. In places with poor ventilation, periodically open windows, etc. to let in fresh air.

# How to care for ECOCARAT

\* The cleaning method is different for ECOCARAT and ECOCARAT PLUS. For details on the cleaning method of ECOCARAT PLUS, refer to the next page.

\* Important information. Please read.

## Daily cleaning method

Clean ECOCARAT with a clean and dry cloth.

Wipe off dirt with a clean and dry cloth. Avoid cleaning with a damp cloth or washing directly with water.



If dust is a concern, wipe it off lightly using a disposable-type handy mop, etc.




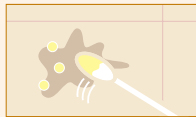

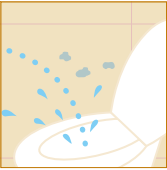



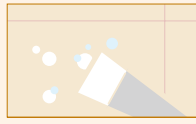




For removing slight amount of dirt, such as finger marks and pencil marks, etc., use a plastic eraser.



Although ECOCARAT is a material that is not easily stained with nicotine and on which stains do not stand out as compared to wallpaper and wooden material, depending on the frequency of smoking, it is recommended to wipe off with a clean damp cloth that has been tightly squeezed.

## When dirt and stains become visible (Use a bleaching agent or cotton swab)

<p>Coffee/tea stains</p> 	<p>Ketchup/mayonnaise/soy sauce/sauce stains</p> 	<p>(1) If any dirt or stain is visible, remove it with a slightly moistened cotton swab.</p> 	<p>(2) Apply bleaching agent (undiluted solution) by tapping gently with the cotton swab.</p> 	<p>(3) Leave as is for a day. The stain will become less obvious.</p> 	<p>* If the stains are still visible, repeat steps (1) to (3).</p>
<p>Urine droplets</p> 	<p>(1) After the stain has dried, dip a cotton swab in chlorine bleach (undiluted solution), and apply the solution by gently tapping the stain.</p> 		<p>(2) Leave as is for a day. The stain will become less obvious.</p> 		<p>* If the stains are still visible, repeat steps (1) to (2).</p>
<p>Toothpaste</p> 	<p>(1) Remove as much of the stain as possible using a plastic spatula or toothbrush.</p> 		<p>(2) Rub off the stain using a plastic eraser.</p> 	<p>(3) Wipe off with a clean and tightly squeezed damp swabbing cloth or a lightly moistened cotton swab.</p> 	<p>* If the stains are still visible, repeat steps (1) to (3).</p>

\* Be sure to thoroughly read the usage precautions before using the detergent or bleaching agent.

## Precautions

There are some stains that are hard to remove. Please avoid getting ECOCARAT stained by the following stains.

### Hard to remove stains

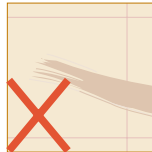
Splashes from washing hands



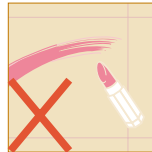
Shoe/slipper marks



Rubbing marks of resin



Lipstick



Hair dyes



<Others>

- Inks/Paints
- Pens (water and oil-based)
- Crayons
- Nail polish
- Inks


### Notes on cleaning

- Cleaning with a dry cloth or cotton swab may cause the stain to spread. Be sure to test cleaning at a place that is not very noticeable.
- If the stain is heavy, or has been left untreated for a long time, it may not be removed by the methods described above. Please try to wipe off stains as soon as possible.
- If nicotine stains are left until they turn yellow and sticky, they become more difficult to remove. Regular cleaning is recommended.


**Items not to be used for cleaning**

\*May result scratches or spreading of stains


**Damp cloths**




**Sand erasers**



**Hard kitchen sponge**



**Metal scourers**



90

# How to care for ECOCARAT PLUS

\* Important information. Please read.

## Daily cleaning method

ECOCARAT PLUS can be cleaned by using a damp cloth or detergent, which makes daily cleaning easy.

Wipe off stains with a clean damp cloth. Avoid washing directly with water.



- The cleaning performance can be improved by using a detergent for household use.
- Partial dirt and stains can be cleaned effectively using a melamine foam.
- Use a melamine foam with a detergent for best results.

<p>Urine droplets</p>	<p>Splashes from washing hands</p>	<p>Toothpaste</p>
<p>Shoe/slipper marks</p>	<p>Rubbing marks of resin</p>	<p>Finger marks</p>
<p>Coffee/tea stains</p>	<p>Ketchup/mayonnaise/soy sauce/sauce stains</p>	<p>Nicotine stains</p>

**For better cleaning performance**  
Wipe off using a clean cloth dampened with a household detergent.  
For heavy stains, use a melamine foam.

**(Precautions on detergents)**  
A household detergent is used to clean furniture, wallpaper, windows and electric products, and the concentration of surface active agent is no more than 1%. Do not use detergents for kitchen fans and oven range hoods, acidic detergents (like toilet bowl cleaner), and solvents like thinner and cleansers. This may lower maintenance performance.

## Precautions

There are some stains that are hard to remove. Please avoid getting ECOCARAT stained by the following stains.

Hard to remove stains

Lipstick



Hair dyes



<Others>

- Inks/Paints
- Pens (water and oil-based)
- Crayons
- Nail polish
- Inks

Notes on cleaning

- When cleaning, do not let stains or detergents penetrate into the side or back of tiles. Use cotton swabs if necessary.
- If the stain is heavy, or has been left untreated for a long time, it may not be removed by the methods described above. Please try to wipe off stains as soon as possible.
- If nicotine stains are left until they turn yellow and sticky, they become more difficult to remove. Regular cleaning is recommended.
- If the sides of tiles are stained, clean promptly using a toothbrush dipped in household detergent. It may not be possible to clean some stains.

**Items not to be used for cleaning**

\*May result scratches or spreading of stains

**Dirty cloths**

**Sand erasers**

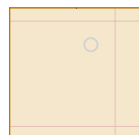
**Hard kitchen sponge**

**Metal scourers**

## If ECOCARAT / ECOCARAT PLUS is scratched



Small scratches can be made less visible using "CARAT CAULK", the caulking and repairing agent designed for this product or with a commercially available touch-up pen. For noticeable scratches, please discuss tile replacement with your contractor.



Screw or hook holes cannot be repaired completely. Use "CARAT CAULK" or a touch-up pen to repair (However, they do not become completely invisible).

For Precious Life

**LIXIL Corporation**

As a top runner in the industry,  
LIXIL is engaged in advanced  
activities for the global environment.

For more information on the company and our products, see the LIXIL official website

**<http://www.lixil.co.jp/>**

\* For more information on the location of showrooms, catalog browsing and inquiries,  
and drawings and CAD data, visit our official website above.

**Safety Precautions**

Before using the product, be sure to thoroughly read the "Instructions Manual" for correct usage of the product. Perform installation and setting-up work according to the "Installation and Setting-Up Manual" and "Installation Manual". In either case, wrong handling of the product could result in accidents or damage.

**Protection of Personal Information**

LIXIL acquires personal information of users and distributors handling our products at the time of product delivery, and uses it for the purpose of future quality assurance, maintenance, and the objectives specified in the company's privacy policy. For details on handling of personal information, see "Privacy Policy" on our official website.

- Since the photographs have been printed, the color may differ from that of the actual product. Check the actual product or sample to confirm the color.
- Please note that the specifications are subject to change without prior notice.
- Unauthorized reproduction of the contents, photographs, or illustrations appearing in this catalog is strictly prohibited.